

2024 EVENTS & HAPPENINGS

MARCH 2024

Sunday, March 17th 2 PM
Annual St. Patrick's Day Parade
Stockholm, WI

APRIL 2024

Saturday, April 20th
Annual Spring Flood Run AREA-WIDE
One of the largest and oldest motorcycle charity runs in the country, working to raise money for Gillette Children's Hospital.

MAY 2024

Friday, May 3rd - Sunday, May 5th
100 Mile Garage Sale AREA-WIDE

JUNE 2024

Saturday, June 1st
17th Annual Tour de Pepin AREA-WIDE
Event offering cycling enthusiasts the opportunity to enjoy the captivating terrain and historic towns that line Lake Pepin along the Great River Road.
<https://lakecity.org/news-events/tour-de-pepin>

Friday, June 7th - Sunday, June 9th
Spring Fresh Art Tour AREA-WIDE
Studio and gallery tour throughout the picturesque villages and countryside of Pepin, Pierce and Buffalo counties. www.freshart.org

2ND ANNUAL TRILLIUM FESTIVAL

MAY 11 & 12, 2024
MOTHER'S DAY WEEKEND

POLLINATOR CELEBRATION

AUGUST 10 & 11, 2024
SATURDAY & SUNDAY

OPEN-AIR TRAIN RIDE TIFFANY BOTTOMS

SEPTEMBER 28, 2024
SATURDAY - STATE NATURAL AREA

SCAN NOW & LEARN MORE TODAY  
  RUSTIC ROAD GALLERY
STOCKHOLM, WISCONSIN
COOPERHANSEN.COM

Saturday, June 8th
Pepin County Dairy Breakfast
Koller Farm - Pepin County, WI

Saturday, June 22nd
Scandihootenanny STOCKHOLM, WI

JULY 2024

Thursday, July 4th 1 PM
Annual Independence Day Parade
Stockholm, WI

Saturday, July 20th 10 AM - 5 PM
50th Annual Stockholm Art Fair
Stockholm, WI www.stockholmartfair.com

AUGUST 2024

Thurs, August 1st - Sunday, August 4th
Blues on the Chippewa DURAND, WI

Thurs, August 1st - Sunday, August 4th
Buffalo & Pepin County Fair
Buffalo County Fairgrounds MONDOVI, WI

Saturday, August 10th
Lake Pepin PRIDE STOCKHOLM, WI

SEPTEMBER 2024

Saturday, Sept. 14th - Sunday, Sept. 15th
Laura Days PEPIN, WI
Family event featuring arts and educational entertainment based on the early American pioneer experience of storybook author Laura Ingalls Wilder. Check website for updates. www.lauradays.org

OCTOBER 2024

Saturday, September 21st
Annual Fall Flood Run
One of the largest and oldest motorcycle charity runs in the country, working to raise money for Gillette Children's Hospital.

NOVEMBER 2024

Friday, October 4th - Sunday, October 6th
Fall Fresh Art Tour
Studio and gallery tour throughout the picturesque villages and countryside of Pepin, Pierce and Buffalo counties. www.freshart.org

Thankful & Grateful

An Eight Week-Long Celebration of The Joy of the Holidays along the West Coast of Wisconsin
Visit our website at thewestcoastofwisconsin.com for more information about times and events.

November 2024: Thankful for the Season

November 2nd and 3rd: Thankful for Those We Love
Celebrate your cherished friends and loved ones. Meaningful events and mindful experiences in the Villages along the "Coast." See website for details of happenings in each Village.
Don't Miss! Nov. 3rd - Celebration of Apples at Stockholm Pie. Special events and pie flights!

November 9th & 10th: Thankful for the Season - Food & Fun
Kick off the season with help from the shops of the West Coast of Wisconsin as you plan your holiday events! Explore the Wineries, Distilleries, Gourmet Shops, Bakeries, Kitchen & Entertaining Supplies, and gift boutiques to start the season out in style!

November 16th & 17th: Thankful for the Season - Let the Celebrations Begin!
Nov. 16th and 17th - Start the Season at the opening of the VILLA BELLEZZA WINTER MARKET

November 23rd & 24th: Thankful for the Season - Share Your Thankfulness
Food, Coat, Hat and Mitten Drive in all the Villages on the "Coast"
Don't Miss! Nov. 17th - Pumpkin Celebration at Stockholm Pie. Special events and pie flights!
November 23rd & 24th: Thankful for the Season - Share Your Thankfulness
Food, Coat, Hat and Mitten Drive in all the Villages on the "Coast"
Don't Miss! Villa Bellezza Winter Market

December 2024: Grateful for the Season

November 30th & December 1st: Thankful and Grateful for You
The kickoff for the Christmas Season. Our small local businesses are grateful for you! Delightful holiday shopping with small businesses in the villages of the West Coast of Wisconsin with expressions of gratefulness to you, our guests!
Don't Miss! Winter Market at Villa Bellezza

December 7th & 8th: Grateful for the Season - Celebration Time!
Dec. 7th - *God Jul in Stockholm: The Holiday - Scandinavian Style*
A Traditional Scandinavian Holiday in Stockholm
Stockholm Artisan Food and Makers Markets
Dec. 7th - Maiden Rock Country Christmas
Dec. 7th & 8th - Winter Market at Villa Bellezza

December 14th & 15th: Grateful for the Season - Family Time!
Dec. 14th - *God Jul in Stockholm: The Holiday - Scandinavian Style*
Handmade Holiday - Hands-on celebration of Christmas for the whole family
Stockholm Artisan Food and Makers Markets
Dec. 14th and 15th - Winter Market at Villa Bellezza

December 21st & 22nd: Grateful for the Season - Season Finale!
Dec. 21st - *God Jul in Stockholm: The Holiday - Scandinavian Style*
Fires of Stockholm: A Solstice Celebration
Stockholm Food and Makers Market
Don't Miss! Last weekend of the Villa Bellezza Winter Market

FEBRUARY 2025

Winterfest at Camp Pepin YMCA

DATE TBD Pepin, WI

Pepin Lions Club Ice Fishing Contest

DATE TBD Pepin, WI

Please Visit WWW.THEWESTCOASTOFWISCONSIN.COM
for a full list of events and more information!

 THE TRAVELER is brought to you by THE WEST COAST OF WISCONSIN TOURISM ASSOCIATION



THE TRAVELER

2024 EDITION

FREE



The ribbon of rural countryside along Lake Pepin's shoreline is known as the West Coast of Wisconsin, the setting for dramatic landscapes and sweeping views that coalesce with the five lakeside villages of Bay City, Maiden Rock, Stockholm, Pepin, and Nelson. By historical design, each village is distanced about 6 miles from the next, harkening back to a time when a round-trip horse and buggy ride to a neighboring settlement took a full day. Today, this passage is nationally recognized as a segment of Wisconsin's Great River Road, and while its transit is far less arduous than in bygone days, this 28-mile journey continues to inspire a slackening of the reins and a savoring of the journey. The northern gateway to the West Coast is the historic village of Bay City. Stationed on a wide inlet where the Mississippi River broadens into Lake Pepin, Bay City is heralded for its campground and sandy beach where visitors picnic, camp, launch boats, and watch eagles soar over Lake Pepin's headwaters.

Slipping over the hill and down the road apiece through the Rush River Delta State Natural Area, the village of Maiden Rock nestles comfortably into a narrow valley in the foothills and boasts unique shops, fresh berry picking, and trout fishing on the Rush. An exponential shift in geography occurs east of Maiden Rock, where rocky shoreline and steep hills hug the roadway. Limestone bluffs keep stalwart watch over candescent Lake Pepin below. This immensity of backdrop escorts travelers into Stockholm, the vintage hamlet where dwells the art and heart of the West Coast. Treasure resides within Stockholm's shops, galleries, eateries and the historic beach park where Lake Pepin breaks upon its shoreline. As the lofty terrain of the West Coast diminishes in size and recedes from the water's edge beyond Stockholm, wood thickets and rolling pastureland reclaim this ancient Mississippi River floodplain. The next sojourn is Pepin. Situated on a wide prairie, Pepin is the locus for eateries,

wine bars, shops, weekend evening entertainment, and a wide variety of lodging options. Once through Pepin, the road descends into the vast wetlands of the Chippewa River delta. It is the Chippewa that, 20,000 years ago, carried a steady torrent of sand and coarse gravel to this drainage basin, backing up the Mississippi River and carving Lake Pepin deep into this ancient valley. Emerging from these river bottoms, the road bends into the village of Nelson, a tiny place with its own dash of verve where one can camp under double limestone bluffs, nosh on Wisconsin cheese, and imbibe on vodka and gin distilled from local homestead-grown crops. To embark upon a road trip along the West Coast of Wisconsin is to explore the choreography of beauty, landform, and rural communities united by this 28-mile stretch of Wisconsin's Great River Road, the scenic intrigue of the highway yielding to each keynote village along its path.

The West Coast of Wisconsin

FOOD DRINK HISTORY ARTS CULTURE SHOPPING NATURE

Stockholm Art Fair Celebrating 50th

What's 50 years between friends? The Stockholm Art Fair was started by a group of artist friends in 1973 and it wasn't just about selling art. It was an invitation to the community to meet their new neighbors and create an understanding about what these artists were up to. It was a fun day in the park and it was well worth repeating the next year and the next year after that. In fact, the Stockholm Art Fair has been a regular occurrence in July for the past 50 years with only one exception. Yes, like so many events, we had to skip one during the pandemic. And so, this year, we are celebrating the 50th running of the Stockholm Art Fair.

The art fair is still influenced by those founding friends as it is still managed by artists, volunteers and friends. And it's still about celebrating community and sharing our beautiful area with new friends while we support our invited artists. Since the start, we continue to try and make each show unique and more special than the last. The artists and spectators come from a little further away and our reputation, as one of the best art shows in the area, continues to grow.

Besides great visual arts, we fill the air with music from the stage, featuring some of our best local and invited musicians. The smell of great food also fills the air with local grocers serving it up under the pavilion and a great selection of vendors bordering the park. Our committee will be working hard to make this 50th show one of our best and you can help by being a friend of the Stockholm Art Fair. Please join us in the beautiful Stockholm Park on Saturday, July 20th, 2024!



Stockholm Art Fair | 50 YEARS

Help us celebrate our 50th year of fine art and craft, fabulous food and local live music. All happening in the beautiful, shaded village park on the shores of Lake Pepin in Stockholm, Wisconsin.

Saturday, July 20, 2024, 10-5



Breakfast, Brunch and Coffee: The ultimate vacation luxury!

The West Coast of Wisconsin really is the perfect destination for a weekend or longer. You have taken a break from the rat race, driven down that beautiful ribbon of road to get to your charming inn, vacation home or B & B. Settle in and start planning how to treat yourself to some very special things while you're here. One of the favorite "luxuries" on vacation is to be able to get up and find the perfect spot for a leisurely breakfast or Sunday brunch and a great cup of coffee. The "Coast" offers some world class options for you.

Chef Shack Bay City: Sunday brunch at Chef Shack is almost as much art as it is food. The ladies at the small weekend only hot spot know what they are doing. The James Beard nominated duo brings out exquisite tastes and experiences on every plate. You will want to think about reservations. Chef Shack, W6379 Main St, Bay City, WI 715-594-3060. www.chefshackbaycity.com.

Sunrise Coffee on 35: For those of you who just can't sleep in, you're in luck. Sunrise Coffee opens early, like 5:30 early, and has every coffee drink under the sun along with tasty pastries and lite fare. Sunrise Coffee on 35, W6442 Hwy 35, Bay City, WI. 715-941-1999. www.sunrisecoffeeon35.com.

Stockholm Pie and General Store: One of the most loved pie shops and cafes in the country, Stockholm Pie opens earlier on Friday and Saturday for their delicious take on breakfast. The famous pie shop and cafe handcrafts delightful breakfast treats and breakfast sandwiches along with their famous pie. Full espresso bar, plus you can pick up eggs, butter, cheese and more in the delightful Marketplace store attached to the cafe. Stockholm Pie, N2030 Spring St. Stockholm WI. 715-442-5505. www.stockholmpie.com.

Humble Moon: This utterly charming eatery, shop and bar offers Sunday brunch/breakfast all day. Everything is scratch made on the small, well thought out menu. Great bloody mary's too! Humble Moon, W12128 Great River Road, Stockholm, WI. 715-495-0743. www.humblemoonsaloon.com.

Allaire Coffee Shop: Located in the historic Allaire House, a vacation rental in Stockholm. Allaire house crafts a great cup of coffee and espresso. Try some homemade treats (they are well known for the scones) to go with your latte. Open

weekends only. W12084 WI-35, Stockholm, WI. 952-913-6502. www.thewestcoastofwisconsin.com/allairehouse

Homemade Café: Homemade Café is the quintessential breakfast joint, where locals and visitors alike take a seat and enjoy the food. Pepin, WI.

Pepin Bistro: Creative, well-crafted food in a charming little spot. The owner knows what he's doing in the kitchen. Pepin, WI.

E & S Fresh Market: Want to make your own breakfast in the comfort of your beautiful vacation home? You can find all the fixings to make your own breakfast at the Market at 410 2nd Street, Pepin, Wisconsin. 715-442-2441. www.eandsfreshmarket.com (closed Sundays).

While you're on the West Coast of Wisconsin, indulge yourself and take time to sit and enjoy a wonderful breakfast or brunch. Succumb to "river time" and sit back and enjoy!



Enjoy a hearty breakfast at Humble Moon in Stockholm.

Historic Stockholm Opera Hall Event Center

- Events • Grooms Dinners
- Reunions • Parties

Catering, Wine & Beer, Desserts
 10300 Spring Street | Stockholm, WI 54769
 (715) 442-5000

Brought to you by Stockholm Pie
www.stockholmpie.com

Espresso • Signature Lattes • Cold Brews •
 • Prappes • Freshly made Breakfast Sandwiches • Ice Cream •

Located Downtown Bay City, WI
 Come visit us either by drive-thru or inside our beautifully designed coffee shop.
 We have something for everyone to enjoy!

SUNRISE COFFEE

10642 State Road 35 Bay City, WI 54724
 715-941-1999 •
www.sunrisecoffeeon35.com

E & S Fresh Market Grocery Meat Produce Catering

E & S Fresh Market, LLC
 410 2nd St
 Pepin, WI 54759
 715-442-2441
eandsfreshmarket.com

PICKLE FACTORY
Beer & Grill
Pepin, Wisconsin

On Lake Pepin Open Year Round
 205 First Street, Pepin, WI
 Call us at 705-442-4400 or visit our website at
www.pepinpicklefactory.com for current hours

MARKET SAMPLES DAILY!

NOW OPEN: NEW! Wisconsin Food & Sundries Marketplace.
 • Wisconsin Cheese • Wines • Beers • Foods & Sundries

WORLD FAMOUS PIE!

Cafe featuring the best of...

- Delicious Sandwiches
- Ice Cream & Soda
- Coffee & Espresso
- Salads & Soups
- Nostalgic Candies
- Wisconsin Cheese
- Incredible Pot Pies
- Gifts & Toys
- Wine, Beer & Sundries

...and of course World Famous Pie

www.stockholmpie.com
 N2030 Spring Street | Stockholm, WI 54769 | (715) 442-5505

Stockholm Pie & General Store

LAVENDER BLUFF FARM
 STOCKHOLM, WISCONSIN

Pick your own lavender farm nestled in the bluffs of Stockholm Wisconsin

Visit our farm shop May - October. Our lavender picking season begins mid July. We are excited about a few projects we're working on around the farm and we look forward to seeing you in 2024.

Visit our website for events and farm updates.

Lavender Bluff Farm | W11976 Hwy 35 | Stockholm, WI 54769
www.lavenderbluff.com

Where to Stay

Stay with us along the West Coast of Wisconsin and see life from a different perspective. We have lots of options for comfortable lodging while you're here, so bring your friends, bring your family, or just bring yourself and settle in. For a home-away-from-home experience, the built-in hospitality of a short-term rental is for you. Enter one of the river towns as your desired destination in an online marketplace such as VRBO.com, Airbnb.com or Booking.com, and you'll turn up the right-size property for your group!

If comfort, convenience, and the need to be close to the action is your thing, one of our local budget-friendly motels will be an excellent choice. Or embrace the personal atmosphere of a bucolic inn where your host will make you feel comfortable and welcome.

Of course, there is no shortage of camping opportunities along the West Coast of Wisconsin! Get a bit of headspace among the trees and sleep in a tent or watch TV in the comfort of your RV, whatever suits your fancy. Or add some novelty to your camping experience and try yurt glamping, where the outdoors

merges with a little lux. Y M C A Camp Pepin is an excellent option for group retreats, family & friends' gathering or team building. You get a bunkhouse with clean showers, a comfy place to lay your head, food service options, and beautiful Lake Pepin at your doorstep.

A quick Google search or exploration on an online marketplace will track down the lodging options described in this article. Among your online options, there are several overnight-stay opportunities listed in this section that are paid members of the West Coast of Wisconsin Business & Tourism Association, and we encourage your patronage of them.

Let us win you over with a promise of quality service and an exceptional lodging experience along the West Coast of Wisconsin. Stay here once and carry those memories forever.

PEPIN GUEST HAUS
Lake View Loft Vacation Rental
in Beautiful Pepin, WI

1 bedroom, 1 bath - up to 4 guests

Rustic modern architecture, natural decor, rooftop deck, fire pit, walking distance to all of Pepin's attractions

[PepinGuestHaus.com](https://www.PepinGuestHaus.com)




Two scenic vacation rentals with some of the best views of Lake Pepin and the Pepin Marina

PEPIN MARINA RETREAT

[PepinMarinaRetreat.com](https://www.PepinMarinaRetreat.com)



CAMPGROUNDS

Nelson's Landing RV Park E203 Cleveland Street - Nelson, WI. 507-884-5017 or 507-993-7478; nelsonslandingrvpark@gmail.com; Season: May 1 - October 31. In the heart of Nelson below the majestic Mississippi river valley bluffs and within walking distance of many amenities.

Pepin Campground 1010 Locust Street - Pepin, WI. 715-442-2012. Season: April 15 - October 15. Enjoy the peacefulness of the great outdoors just blocks from Lake Pepin.

Stockholm Village Park Spring Street - Stockholm, WI. Park Host: 651-380-8654. No reservations. Camp in the historic Stockholm Village Park. Boat launch, fishing pier, and small swimming beach.

Maiden Rock Village Park Hwy 35 - Maiden Rock, WI. Village Office: 715-448-2205; contactmaidenrock@gmail.com. Twelve shady camping sites for RVs and tents near Lake Pepin in the village of Maiden Rock.

Bay City Campground W6490 Lake Pepin Blvd. - Bay City, WI. 715-594-3229 or 715-594-3168. Season: April 15 - October 15. Pull-through dump station, rustic tenting, fish cleaning area, pavilion, public boat launch, sandy beach, play area.

VACATION RENTALS

Pepin Guest Haus 1485 First Street - Pepin, WI. PepinGuestHaus@gmail.com. [PepinGuestHaus.com](https://www.PepinGuestHaus.com). VRBO.com. Cozy yet modern and fresh loft, beautiful views of Lake Pepin, walking distance to everything in town.

Pepin Marina Retreat 406 First Street - Pepin, WI. Hello@PepinMarinaRetreat.com. [PepinMarinaRetreat.com](https://www.PepinMarinaRetreat.com). Airbnb.com. Featuring views of Lake Pepin, the Cottage Apartment with Deck or the Street Level Loft Apartment may be rented solo or in combination! Within walking distance to Harbor View, Pickle Factory, and the marina.

Art Orchard Gallery & Guesthouse N2042 Spring Street - Stockholm, WI. kendragebbia@gmail.com. Spacious guest suite with everything you need for a peaceful and comfy stay, right in the Heart of Stockholm.

Allaire House W12084 W1-35, Stockholm, WI. info@rivertownland.com. RivertownLand.com. Airbnb.com. Upstairs private suite in the heart of Stockholm, private access. Enjoy the charms of small-town living with easy walks to nearby favorites. In the heart of Stockholm.

Plann Store Hwy 35, Stockholm, WI. [evolve.com/vacation-rentals](https://www.evolve.com/vacation-rentals). Unwind in the middle of Stockholm's small-town charm. Eclectic design, 3-season porch. Fully equipped.

Maiden Rock Retreat W3487 State Road 35, Maiden Rock, WI 54750. [MaidenRockRetreat.com](https://www.MaidenRockRetreat.com). VRBO.com. Airbnb.com. Originally a creamery in the 1940s, much of the original character has been maintained in this comfortable space on the shore of Lake Pepin.

Journey Inn W3671 200th Avenue, Maiden Rock, WI. info@JourneyInn.net. JourneyInn.net. An eco-friendly and holistic bead & breakfast experience nestled in the tranquil surroundings near Lake Pepin.

Plann Store Steps away from shops, restaurants and a museum is an artful place for you to stay in Stockholm, WI with a private pond, garden and patio. 612-990-7373 <https://www.evolve.com/vacation-rentals/452359>



Art Orchard Gallery - Stockholm

Original Woodcut Printmaking

ART ORCHARD

Prints, Gifts, and more

kendragebbia.com
N2042 Spring St Stockholm, WI 54763

Plann Store

Steps away from shops, restaurants and a museum is an artful place for you to stay in Stockholm, WI with a private pond, garden and patio.

612-990-7373

<https://www.evolve.com/vacation-rentals/452359>

Get Outside!

We all love to GET OUTSIDE! And there is no better place to do that than on the West Coast of Wisconsin! The beautiful Lake Pepin area is perfect for a day trip or weekend outdoor adventure. You can fish, you can kayak, you can hike! We love the 5 local Get Outdoors and Hike options, along with a few other nearby spots along or near the Great River Road on the West Coast of Wisconsin.

Maiden Rock Bluff State Natural Area: Just outside of Stockholm Wisconsin, about 3 miles up County J, you will find this State Natural Area. The Area is the home of several rare animal and plant species, including nesting peregrine falcons, golden and bald eagles, and 250-year-old red cedars. The approx. 2-mile trail takes you through ancient cedars, native prairie and to one of the most iconic views on the whole of the Mississippi. Sunsets here are breathtaking and beyond compare. You can find out more information at <https://dnr.wi.gov/topic/Lands/naturalareas/index.asp?SNA=410>.

Tiffany Bottoms Wildlife Area: Downriver from Pepin, WI is one of the most important, biodiverse wildlife areas in the country. Tiffany Bottoms State Natural Area is a small portion of the most extensive river delta in the

Midwest and contains 13000 acres of the larger Tiffany Bottoms floodplain forest. The site captures the transition between typical floodplain forest of silver maple, river birch, ashes, and basswood in the southern portion and the more oak dominated forest in the northern part. One of the more unique ways to explore this area, although not a hike, is the Tiffany Bottoms Train Ride which follows an old railroad through the Tiffany Bottoms. You can learn more about the train here at <http://chippewavalleymotorcarassociation.ellavision.com>. Do be aware that trails throughout the wildlife area are not marked and can be flooded at times. Bring bug spray! For more information about the Wildlife Area, you can go to <https://dnr.wi.gov/topic/Lands/naturalareas/index.asp?SNA=30>.

Five Mile Bluff State Natural Area: The Natural Area is technically a part of the greater Tiffany Bottoms Area, but on the west side of the grand Chippewa River. A trail takes you through a diverse and fragile ecosystem that gets you close to floodplain forests, wild grasses, and oak barrens. The trail runs about 3 miles total. From a parking lot at the end of 16th Creek Road, the trail heads north at the base of Five Mile Bluff then loops to and over its top, which is more than 300 feet above the river. Information can be found at <https://dnr.wi.gov/topic/Lands/naturalareas/index.asp?SNA=236>.

Swede Ramble Trail: Also part of the Tiffany Bottoms Wildlife area, the trail can be found on the west side of the

Chippewa River. The trail is about 4-miles one-way through a meadow and the bottomland hardwood forest. Start at the parking lot off Swede Ramble Lane southeast of Little Plum Creek and end at another lot off of Truip Lane east of Big Hill Road. A bit more info can be found here at <https://dnr.wi.gov/topic/Lands/documents/tiffany.pdf>.

Thrive! Center and Thrive! Park: Thrive! Park is a public park in the Village of Nelson. The Park is unique in that it consists of over 25 acres of Mississippi River bluff top and bluff side. The primary bluff is the Sisters and Lost Brother. The three southernmost bluff tops are in the Park and accessible via hiking roads and trails. On the bluff tops and bluff sides are "goat prairies" that have recently been cleared as part of a larger prairie restoration effort around Nelson. Thrive! Park is east of Highway 35 in Nelson (WI). Take Cleveland Street toward bluffs. As you enter woods, turn left on Christopherson Road. Just after turn, there is a parking lot on right to park. Park entrance and road/trail markings are just left of parking lot. There is also parking up the paved road below the Fish Pond. Free maps are generally available at the park entrance. More information about the Center and trail can be found at <http://www.thrivepark.org/>.

Nearby and worth the drive: **Nine Mile Island State Natural Area** <https://dnr.wi.gov/topic/Lands/naturalareas/index.asp?SNA=236>. **Holden Park Trails** <https://dnr.wi.gov/topic/Lands/naturalareas/index.asp?SNA=236>. **Chippewa River State Bike Trail** <https://dnr.wisconsin.gov/topic/parks/chipriver>.

Bird Watching Along the West Coast of Wisconsin

Regions throughout Pepin County offer amazing bird watching experiences for visitors and locals alike. With prime locations on the Mississippi and Chippewa Rivers, the Driftless limestone bluffs, and a variety of state natural areas, there are numerous bird habitats and species that bird watchers can spot throughout the area. Pepin County's unique location also brings some of North America's greatest migratory bird species through the region. Because of this, there is a fun bird scavenger hunt for bird watchers, with over 180 bird species to spot throughout the region, that you can find at [VisitPepinCounty.com](https://www.VisitPepinCounty.com). Get started on your next visit with these great locations.

Tiffany Bottoms State Natural Area: The Tiffany Bottoms State Natural Area is a part of the Tiffany Bottom floodplain forest, making it an extensive home for many species of birds and wildlife in general. Bird watchers can visit the area and spot rare and uncommon raptors, warblers, Great-Blue Heron, Pileated Woodpeckers, and Blue-Gray Gnatcatchers.

Five-Mile Bluff Prairie State Natural Area: This state natural area located on the Chippewa River in Pepin is another birding destination in Pepin County. The Chippewa River Valley is home to many species of birds due to the unique topography of the area and a variety of habitats. Large numbers of migrating hawks and eagles can be seen, as well as other common species.

Lake Pepin: Lake Pepin, on the Mississippi River, is a destination on the border of Pepin County that is considered a mecca for bird watching throughout the year. The Lake Pepin area is a National Audubon Society's Important Birding Area, giving it a formal designation as an excellent place to spot a large variety of birds. Bird watchers can view American Bald Eagles, tundra swans, pelicans, hawks, falcons, warblers, and more. During the warmer months, bird watchers can even head out on local boat excursions into the backwaters of the Mississippi for a unique birding experience.

Pine Creek Preserve: Pine Creek Preserve, located near Maiden Rock, is a great place in Pepin County to see wildlife of all kinds. But the Pine Creek Valley is widely regarded as one of the county's best birding spots. The creek features an undisturbed wooded valley and cool, clear water, making it a great habitat for many bird species. Bird watchers should consider visiting the Pine Creek Preserve area to check off a variety of species on their scavenger hunt list.

Maiden Rock Bluff: Along with beautiful scenic views of the Mississippi River, Lake Pepin, and Pepin County, at the top of Maiden Rock Bluff bird watchers will also find a variety of raptor species. The rocky limestone bluffs provide hunting perches and habitats for gyrfalcons, golden eagles, bald eagles, and turkey vultures. This location is also along the Mississippi River flyway, making it an important migration channel for a variety of bird species.

Article courtesy of [visitpepincounty.com](https://www.visitpepincounty.com).

PEPIN | STOCKHOLM | DURAND | ARKANSAW

Visit Pepin County on the West Coast of Wisconsin

WELCOME TO PEPIN COUNTY! SMALLEST COUNTY IN WISCONSIN, AND ONE OF THREE COUNTIES ON THE WEST COAST OF WISCONSIN

TAKE A SHORT DETOUR TO DURAND AND ARKANSAW FOR THESE GREAT EVENTS!

DURAND FUNFEST
JUNE 27th-9th

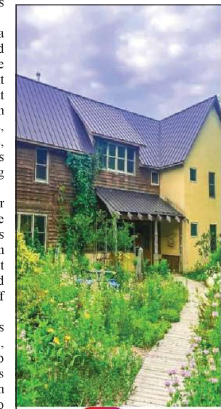
DURAND MUSIC IN THE PARK SERIES
JUNE 19th - UNKAIGED
JULY 17th - CHRIS KROEZE
AUGUST 21st - THE WHITESIDE WALLS/TASTE OF DURAND

ARKANSAW CREEK PARK DAYS
JUNE 15th

BLUES ON THE CHIPPEWA
AUGUST 1ST-4TH

REQUEST A VISITOR GUIDE: INFO@CO.PEPIN.WI.US

Andrew Gavin Photography



Journey Inn

AN ENCHANTING ECO RETREAT NEAR LAKE PEPIN

Tranquil Luxury B&B w/ Four Course Breakfast And The Cottage (2 Bed 2 Bath Cabin)

Resting on 33 Acres - Hike • Bike • Ski • Explore

Romantic Weekends • Solo Retreat • Girls Getaway • Family Reunion • Retreats • Events

www.journeyinn.net • 715-502-5004 • info@journeyinn.net
W3671 200th Ave Maiden Rock, WI



History of Lake Pepin

There is a spot where the great river widens and slows, as it has for tens of thousands of years. This mythical place is known as Lake Pepin. Many thousands of years ago, the great water stretched from the mouth of the Chippewa River to almost where St. Paul, Minnesota now stands. The lake today is 22 miles long and up to 3 miles wide in spots – making it the widest natural spot on the mighty Mississippi River.

In the 1680s the French made headway into the area, with Father Hennepin traveling through the region. He bestowed the name “Lac de Pleur,” or Lake of Tears, on the body of water after being kidnapped on the lake by Mdewakanton Dakota tribesmen. Around that same time, the decidedly more desirable name of Lake Pepin was given to the lake in honor of Jean Pepin, a famous French explorer who settled on its shores.



Photo Credit: Vils Bellezza

Over the years, small settlements along Lake Pepin grew into villages, each with its own distinct personality. The village of Nelson was settled in the 1840s and first named Nelson’s Landing. Stockholm was founded by Swedish settlers in 1854. Bay City was settled in 1855. Maiden Rock was established in 1857, followed by Pepin in 1860. The small villages prospered through logging, fishing, clamming, and farming. Large commercial fishing operations and ice harvesting were all part of the economy.

Laura Ingalls Wilder

American author, Laura Ingalls Wilder, was born in 1867 in a small log cabin seven miles north of the village of Pepin. The years that Laura and her family lived in Pepin County were described by her as happy ones, surrounded by the love and security of her immediate and extended family.

In 1874 Laura’s family left the Big Woods of Wisconsin and moved to Walnut Grove, Minnesota. The years to follow included several momentous relocations as the family sought relief from crop failures and financial hardships along their way. When Laura was 18 and living in DeSmet, South Dakota, she married a young homesteader named Almanzo Wilder. The Wilders’ daughter Rose was born the following year.

In later years when Laura and Almanzo were settled in Mansfield, Missouri, she wrote a memoir of her family’s early travels, recalling collective joys and sorrows as they toiled to build solid lives in unfamiliar places across the northern plains.

The fortunes of the tiny villages waxed and waned over the decades, with most becoming decidedly sleepy by the 1960’s and 70’s. A rebirth started late in the 70’s as artists discovered the breathtaking landscape and began to move to the area. Soon tourists followed, and the West Coast of Wisconsin became a destination of five waterfront villages with thriving shops, restaurants, guest houses, wineries, and wedding venues – along with the abundant beauty of nature, making it an irresistible place to visit. ❁



Eventually, Laura’s written memoir became the basis for a fictionalized manuscript of her real-life experiences as a young girl in the Big Woods of Wisconsin. In 1932, Harper & Brother’s Publishing released *Little House in the Big Woods*, tailored for a grammar school-age audience. After the book’s success came seven additional volumes, each capturing life in the various homesteads where her family had settled along their journey.

After Almanzo’s death in 1949 Laura lived alone and spent her time visiting and actively corresponding with her friends and fans. She died at home on February 10, 1957, three days after her 90th birthday.

Another of Laura’s manuscripts about the early days of her marriage was discovered after her death and published in 1971. It is now marketed as the ninth volume in the *Little House* Series. Since the publication of *Little House in the Big Woods* in 1932, Laura Ingalls Wilder’s books have been continuously in print and have been translated into 40 languages. ❁

Laura Ingalls Wilder Museum



306 Third Street, Pepin, WI

2024 SEASON

May 1 through October 31

MUSEUM & GIFT SHOP HOURS:

10 am – 5 pm Daily • 7 Days per Week

Including Memorial Day, July 4th & Labor Day

Visit Laura’s Birthsite

GPS coordinates: N3238 Co. Road CC, Pepin, WI

www.LauraIngallsPepin.com

and find us on Facebook!

Information: livmuseum@lauraingallspepin.com



SPRING TOUR 2024

June 7, 8, 9 | 10:00am – 5:00pm

ENJOY A SELF-GUIDED TOUR OF HOME STUDIOS & GALLERIES!

FALL TOUR 2024

October 4, 5, 6 | 10:00am – 5:00pm

FRESHART.ORG

TOUR THE GREAT RIVER ROAD & THE BACKROADS
OF PEPIN, SOUTHERN PIERCE & BUFFALO COUNTIES.



Native American History of the Region

The Mdewakanton people, a subgroup of the Santee (or Eastern) division of the Dakota tribe, claimed the upper Mississippi River Valley as their ancestral home long before European explorers arrived in the Midwest. The abundant natural resources of what are now Pierce and Pepin Counties provided rich sustenance for the native tribes, and proximity to the Mississippi River and its tributaries facilitated transport and travel.

The Dakota’s social structure was one of kinship, strong family ties, and long-held cultural traditions. Their people held deeply spiritual beliefs and perceived the divine in all their surroundings. Careful stewards of the land, they consumed resources wisely and replenished what they used. Dakota beliefs and practices formed the foundation of their very survival.

In the 18th century, the French fur trade became a double-edged sword for the Dakota, simultaneously generating prosperity for their people while introducing an early threat to their existence through fierce competition for their homelands.

By the 19th century, the Dakota were further

displaced by U.S. treaties that were written to make room for the flood of European settlers. As their people were exiled to the Great Plains, only a handful of Dakota families remained in this region.

In 1889, Congress allocated lands to the descendants of these remaining families, and those land allotments formed the foundation of today’s Dakota reservations. Slowly, the Dakota people began returning to these lands to build new lives.

Today, the Dakota people maintain many separate tribal governments scattered across reservations and communities throughout the Midwest. They work for rightful authority over their own lives and internal affairs and command a voice in issues of historic significance to their people. Dakota elders build awareness of their native traditions by carrying on and teaching cultural practices to new generations of Dakota. In their ancestral homeland of Minnesota there are four federally recognized Dakota nations; the nearest to Lake Pepin is the Prairie Island Indian Nation, created in 1889 in Red Wing, Minnesota. ❁

Legends & Folklore

Sea Monster in Lake Pepin: The folklore of Lake Pepin dates back centuries. Legend has it that Mdewakanton Dakota Sioux natives of this region were wary of a serpent-like sea creature that lurked beneath the deepest waters of the lake. A newspaper account from the late 19th century reports two men on the lake seeing a “marine monster, which moves through the water with great rapidity.” Still today people claim they have caught glimpses of this Lake Pepin Monster. Could it be an eel? Or possibly a sturgeon? Or is it truly an unidentified sea monster that has lived in Lake Pepin mostly undetected for centuries? Nobody knows for sure. But please don’t be frightened; our sea creature has never overturned a boat or taken a bite out of a swimmer or lumbered up onto dry land to bare its teeth. In truth, it seems to be quite shy and introverted, and accordingly, it’s been given the rather sweet name of “Pepie.” Let us know if you see him!

Legend of Maiden Rock: A bit of local folklore tells us of the beautiful Dakota Sioux maiden, Winona, whose father, Chief Red Wing, arranged for her to marry a young man of their tribe whom she did not love. Winona was in love with another man and pleaded with the Chief to accept him as her betrothed, but the Chief angrily rejected Winona’s young lover and sent him away. On the day of her marriage to the man she now detested, in deep despair, Winona leapt from the top of a high bluff overlooking Lake Pepin and plunged to her death in the blue water far below. It’s been said that on a calm night, standing atop Maiden Rock Bluff, one can still hear Winona’s mournful cry as she grieves for her young lover who was cruelly banished from her life.



Photo Credit: MPR News

women owned
authentic
local

ethically made art,
gifts and consumables.

10/21/17 Hwy 35, Stockholm, WI
Follow Us @IrisandOakStockholm
715-445-4121

WWW.SANDYSCLOTHINGANDART.COM

*A boutique fueled
by purpose and passion*

Find us!

Sandy's Stockholm
on Lake Pepin
Sandy's Barn in the
Foster Countryside

Instagram Facebook

*When shopping here, you make a difference.
We appreciate that, and you!*

scandihoo™

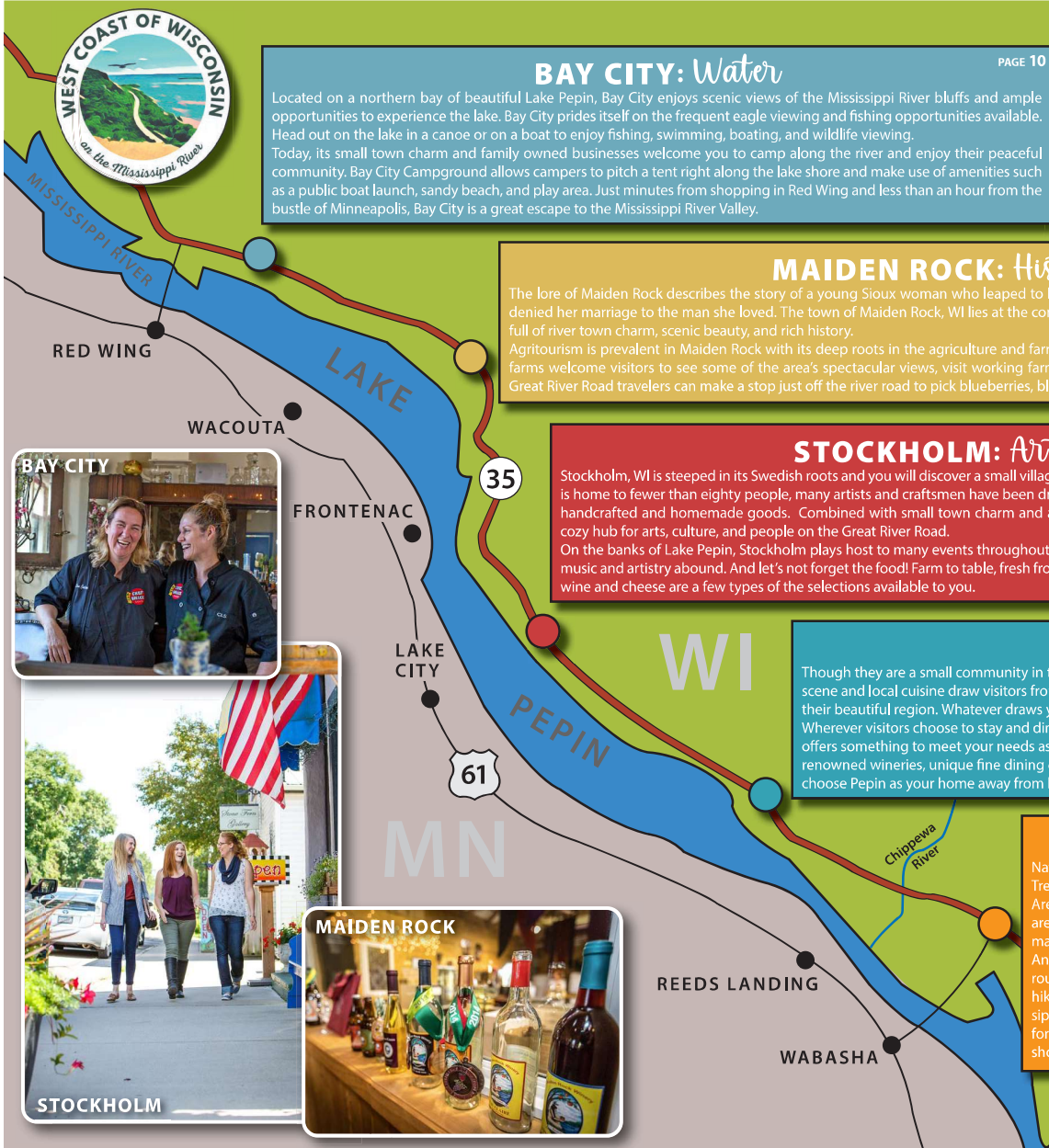
NORDIC STYLE WITH A KICK

Traditional & New Nordic
Hygge Home
Unisex Accessories & Clogs

Visit our
boutique in
the heart of
Stockholm!

Instagram Facebook

@scandihoo_store
www.scandihoo.com
12092 Hwy 35
Stockholm, WI

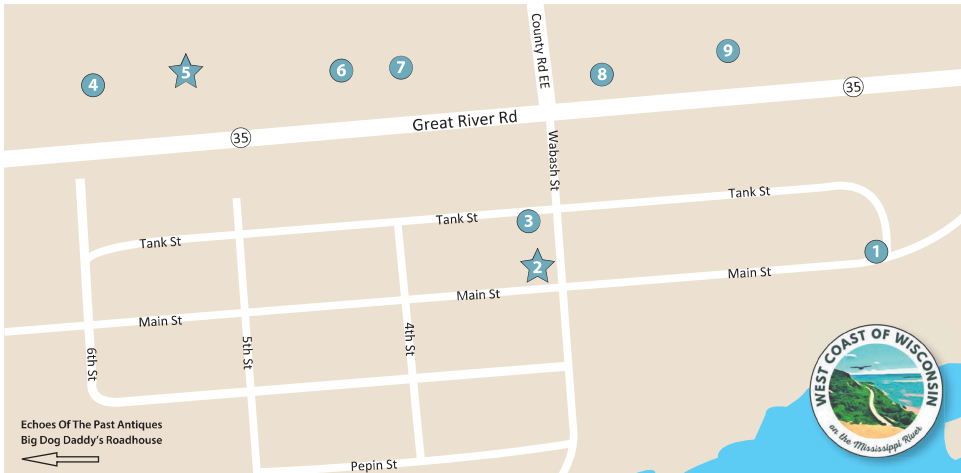


Welcome to the



West Coast of Wisconsin!





BAY CITY

- 1 **Pierce County Historical Association**
W6321 Main St., Bay City, WI 54723
- ★ 2 **CHEF SHACK: James Beard nominated, French-inspired restaurant**
W6379 Main St., Bay City, WI
chefshack1@gmail.com
http://www.chefshackbaycity.com
(715) 594-3060
- 3 **Thrifty Sisters**
N1231 Wabash St., Bay City, WI 54723

- 4 **Outpost Bar and Grill**
W6454 WI-35, Bay City, WI 54723
- ★ 5 **SUNRISE COFFEE ON 35: Handcrafted coffee, great treats and lite fair**
W6442 WI-35, Bay City, WI 54723
sunrisecoffee35@gmail.com
(715) 941-1999
- 6 **Handy Mart**
W6396 WI-35, Bay City, WI 54723
- 7 **Sabe's Loft**
W6390 WI-35, Bay City, WI 54723

- 8 **Old Stuff Antique Shop**
W6373 WI-35, Bay City, WI 54723
- 9 **Dollar General**
Highway 35, Bay City, WI 54723
- Outside of Village–
- Echoes Of The Past Antiques**
N1658 Cr-C, Bay City, WI 54723
- Big Dog Daddy's Roadhouse**
W7037 135th Ave, Bay City, WI 54723

MAIDEN ROCK

- 1 **Cultural Cloth**
W3560 State Hwy 35, Maiden Rock, WI
- 2 **Smiling Pelican Bakeshop**
W3556 State Road 35, Maiden Rock, WI
- 3 **The Nest Gallery & Art Studio**
W3542 Highway 35, Maiden Rock, WI

- 4 **Santosha Springs Yoga**
W3542 WI-35, Maiden Rock, WI
- 5 **Maiden Rock Inn**
N531 County Rd S, Maiden Rock, WI
- 6 **Hiawatha National Bank**
W3532 Highway 35, Maiden Rock, WI

- ★ **MAIDEN ROCK RETREAT: Beautiful lodging and event space in a lovingly restored 1940's era creamery.**
W3487 State Road 35, Maiden Rock, WI
manager@maidenrockretreat.com
www.maidenrockretreat.com (608) 790-5253

- 8 **The Six String Saloon**
W3527 WI-35, Maiden Rock, WI
- 9 **35 Express Gas Station**
W3541 WI-35, Maiden Rock, WI
- 10 **Limbo Records & Rarities**
W3553 State Rd. 35, Maiden Rock, WI
- North of Maiden Rock–
- Rush River Produce Blueberries**
W4098 200th Ave, Maiden Rock, WI
- Vino In The Valley**
W3826 450th Ave, Maiden Rock, WI
- Flaming Fire Art Studio**
N3002 County Road CC, Maiden Rock, WI
- Lakeview Organic Farm**
N1972 420th Street, Maiden Rock, WI

- ★ **JOURNEY INN: An idyllic eco-retreat nestled in the tranquil and secluded surroundings near Lake Pepin in Maiden Rock, Wisconsin.**
W3671 200th Ave, Maiden Rock, WI
Hosts Brent and Jenn, www.journeyinn.net
- Grange Hall Auto Inc.**
W2494 US Highway 10, Maiden Rock, WI



STOCKHOLM

- 1 **Felt Good**
N2020 Spring Street, Stockholm, WI
- 2 **Stockholm Town Mutual Insurance**
W12121 WI-35, Stockholm, WI
- ★ 3 **IRIS & OAK: Local art, pottery, gift items, products for the home, delicious consumables, and everyday luxuries for yourself.**
W12117 WI-35, Stockholm, WI
(715) 495-9121, @irisandoakstockholm, irisandoakstockholm@gmail.com
- ★ 4 **HUGGA BUGGA: Features original hand-crafted items from local artisans and a large assortment of luxury yarns.**
W12103 State Hwy 35, Stockholm.
(612) 308-1714, www.huggabugga.com, char@huggabugga.com
- ★ 5 **LAVENDER BLUFF FARM: Crafts safe, responsibly grown and sourced goods for the body, home and kitchen. Open seasonally for u-pick.**
W11976 Highway 35, Stockholm, WI
(715) 991-0060, www.lavenderbluff.com, info@lavenderbluff.com
- 6 **Stockholm Gardens**
W12014 WI-35, Stockholm, WI
- 7 **Stockholm Clinic**
12070 WI-35, Stockholm, WI
- ★ 8 **ALLAIRE HOUSE COFFEE & VACATION RENTAL: The place to grab great coffee! Scones, soup, and biscuits, too.**
W12084 Wisconsin Hwy 35, Stockholm, WI
952-913-6502, info@rivertownland.com, www.evolve.com/vacation-rentals/438284
- ★ 9 **SCANDIHO: Blending traditional craft with a fresh, modern aesthetic that embraces Scandinavian style and creativity.**
W12092 WI-35, Stockholm, WI
www.scandihoo.com, info@scandihoo.com, scandihoo@gmail.com
- ★ 10 **SANDY'S CLOTHING & ART: Supports artists, ethical companies, and sustainable practices.**
W12098 Hwy 35, Stockholm, WI
715-533-0159, www.sandysclothingandart.com, sandy@sandysclothingandart.com

- ★ **THE PALATE: Offers a place for your entertaining taste. Gourmet items, cheese plates and world class wines.**
W12102 State Hwy 35, Stockholm, WI
715-442-6400, www.thepalate.net
- ★ **STOCKHOLM PIE AND GENERAL STORE & MARKETPLACE: World famous pie, amazing food, fun General Store, cheese, wine, beer, treats from Wisconsin in the Marketplace with tastings daily.**
N2030 Spring St, Stockholm, WI
715-442-5505, www.stockholmpie.com, pieandgeneral@gmail.com
- ★ **ART ORCHARD GALLERY & GUEST HOUSE: Artist Kendra Gebbia's studio, gallery and guest house. Each piece is an original work of art made 100% by Kendra.**
N2042 Spring St, Stockholm, WI
612-770-6741, www.kendragebbia.com, kendra.gebbia@gmail.com
- ★ **John Lindgren Building**
N2048 Spring St, Stockholm, WI
- ★ **CALVARY COVENANT CHURCH: Established in March 1887 by the founders of the village of Stockholm.**
105 E 2nd Street, Stockholm, WI
www.stockholmcalvarycov.org
- ★ **Hop, Dish & Vine and Little Larke Bakery**
N2047 Spring St, Stockholm
- ★ **Indigo Swan**
N2051 Spring St, Stockholm, WI
- ★ **STOCKHOLM INSTITUTE MUSEUM: The Stockholm Institute, a/k/a the Stockholm Museum, is a non-profit volunteer organization dedicated to the preservation of materials relating to the history of Stockholm.**
N2041 Spring Street, PO Box 628, Stockholm
- ★ **HUMBLE MOON SALOON**
W12128 State Hwy 35, Stockholm, WI

- ★ **PLANN STORE & LITTLE COLONY ART VACATION RENTAL**
- ★ **STOCKHOLM ART FAIR: 50 years of exquisite art on the shores of the Mississippi. Over 100 juried artists showing on the third Saturday of July every year.**
Stockholm Park, (715) 285-5692, www.stockholmartfair.org, stockholmartfair@gmail.com

- Outside Village Proper–
- ★ **MAIDENWOOD WEDDINGS AND EVENTS: Wedding and event center that sits on a 40 acre nature reserve nestled in the bluffs.**
N447 244th St, Stockholm, (715) 544-7771
www.maidenwoodevents.com
hello@maidenwoodevents.com
- ★ **MAIDEN ROCK WINERY & CIDERY: Presenting a unique collection of gluten-free hard ciders and wines produced from fresh local. Tastings daily with apples available in season.**
W12266 King Lane, Stockholm, WI
715.448.3502, info@maidenrockwinerycidery.com
www.maidenrockappleswinerycidery.com

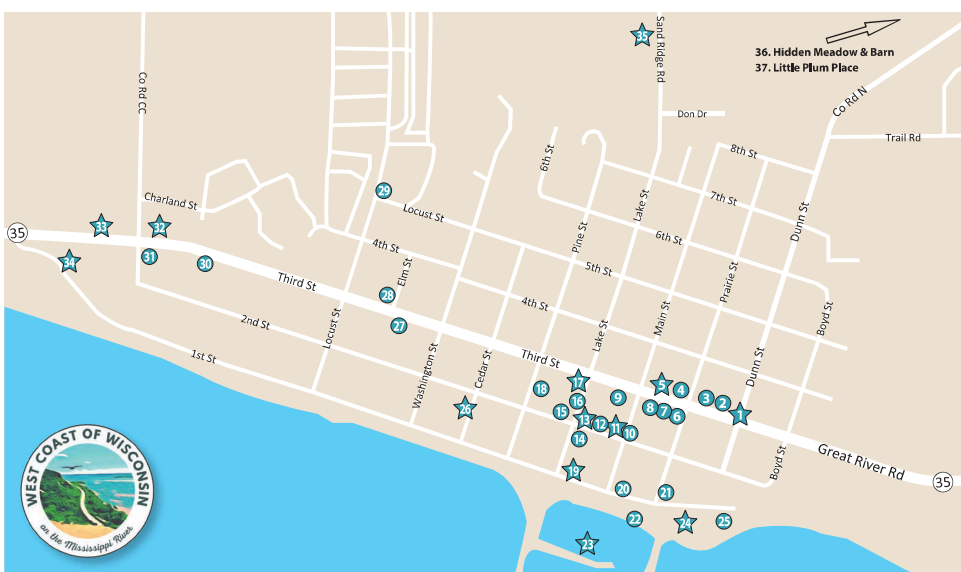
- Liberty Tree Farm**
W12351 Long Ln, Stockholm
- Tip Top Farm**
N3253 County Road E, Stockholm
- ★ **RUSTIC ROAD GALLERY: Work by Cooper Hansen Nature Photography.**
W259 20th Ave (aka Rustic Road), Stockholm, WI
www.cooperhansen.com, info1@cooperhansen.com
- ★ **LOVE YOU MORE FLORAL: Designing fresh, dried & artificial wedding flowers & bringing your inspiration to life is their passion. Exquisite florals for your special event. By appointment only.**
(612) 578-8505, www.facebook.com/loveyoumorefloral, loveyoumorefloral@gmail.com
- ★ **TWIN BLUFF FARM: We host events of all kinds. We love supporting our local community! Host your next party, corporate event, class or wedding with us!**
N2089 Twin Bluff Lane Stockholm, (612) 368-7311, www.twinblufffarms.com, twinblufffarms@gmail.com
- ★ **HERITAGE WOODS: Keeps honeybees, harvests honey, mentors new beekeepers, runs hands-on beekeeping workshops and presents native plant classes. By appointment only.**
N1593 Bogus Road Stockholm, 763-568-8687
Kathy.Sweeney@comcast.net
- ★ **YMCA CAMP PEPIN: On the shores of Lake Pepin, Camp Pepin offers camps for kids and available lodging.**
W10915 E Lake Dr., Stockholm, (877) 395-7665, www.redwinyymca.org/camps/camp_pepin, camp@redwinyymca.com

Hugga Bugga
a handcrafted boutique and yarn store.

612.308.1714
W12103 Hwy 35,
Stockholm, WI 54769
char@huggabugga.com

Don't miss the outdoor and garden art at The Shed!

WWW.HUGGABUGGA.COM



PEPIN

1 TIN ROOF BOUTIQUE: Your favorite spot on The Great River Road for all your home decor, local artisans, refurbished furniture, art and gifting needs! 202 Third Street, PePIN, WI 715-225-4047, tinroofboutique19@gmail.com, on Facebook at Tin Roof Boutique



Scan/Text/Call to book 612-245-4795 www.cruisepepin.com

UNIQUE GIFTS, DÉCOR, APPAREL, HANDBAGS, CANDLES, GAMES AND SPECIALTY FOOD & CANDY. LOCALLY, ONE-OF-A-KIND ARTISAN-MADE HANDCRAFTED ITEMS AND SO MUCH MORE... LOCATED ON THE GREAT RIVER ROAD.

OPEN YEAR ROUND!

LIKE US ON FACEBOOK & INSTAGRAM @TINROOFPEPIN FOR ALL THE LATEST
202 Third Street, PePIN | 715-225-4047

2 Garden Pub Malt Shop
210 Third Street, PePIN, WI

3 Garden Pub & Grill
210 Third Street, PePIN

4 Consumers Cooperative, PePIN Convenience Store
304 Third Street, PePIN

5 LAURA INGALLS WILDER MUSEUM: A museum dedicated to PePIN's history and the early life of Laura Ingalls Wilder, whose story begins here in PePIN. 306 Third Street, PePIN, WI 715-513-9115, liwmuseum@lauraingallspepin.com, www.lauraingallspepin.com

6 Handy Mart
300 Third Street, PePIN, WI

7 Harbor Hill Inn & General Store
309 Third Street, PePIN, WI

8 Great River Amish Inn
311 Third Street, PePIN, WI

9 Third Base Bar
409 Third Street, PePIN, WI

10 PePIN Labyrinth & Studio
408 Second Street, PePIN, WI

11 E&S FRESH MARKET: A full-line grocer with a small town, country atmosphere. All your grocery, produce, and fresh meat needs. 410 Second Street, PePIN, WI 715-442-2441, www.eandsfreshmarket.com

12 T&C Latane
412 Second Street, PePIN, WI

13 RIVERTIME WINE, BEER & AMUSEMENTS: A great hangout in downtown PePIN with a large wine list, craft beers, friendly hosts, and live music. 418 Second Street, PePIN, WI 612-708-8598, rivertime@rivertimepepinlove.com, www.rivertimepepinlove.com

14 Bank of Alma
419 Second Street, PePIN, WI

15 United Methodist Church
504 Second Street, PePIN, WI

16 Captain's Legacy Bar & Grill
206 Lake Street, PePIN, WI

17 TRIPLE J WESTERN SHOP: High quality fun and everyday women's fashion to show off your wildly western side. 210 Lake Street, PePIN, WI, 715-279-125, triplejwesternshop.com, triplejwesternshopllc@gmail.com

18 Immanuel Lutheran Church
205 Pine Street, PePIN, WI

19 PEPIN MARINA RETREAT: Select between 2 cozy lodging options: only steps away from PePIN Marina, Harbor View Café & Pickle Factory. 406 First Street, PePIN, WI, 612-961-2528 www.pepinmarinaretreat.com, hello@pepinmarinaretreat.com

PEPIN BUSINESSES CONTINUE ON PAGE 13

20 Harbor View Café
314 First Street, PePIN, WI

21 Moselle Retail
109 Prairie St., PePIN, WI

22 PePIN Marina
303 First Street (Marina Drive), PePIN

23 CRUISE PEPIN: Public or private pontoon cruises aboard the boat *Tiffany Bottoms*. PePIN Marina, Doc C, Slip 22, 612-245-4795 cruisepepin@gmail.com, www.cruisepepin.com

24 THE PICKLE FACTORY: Dock your boat or cruise down the Wisconsin Great River Road for fresh food, ice-cold drinks, and live weekend entertainment. The ultimate lakeshore experience! 205 First Street, PePIN, WI 715-442-4400, paul@pepinpicklefactory.com, www.pepinpicklefactory.com

25 Smith Brothers Landing
207 First Street (Marina Drive), PePIN

26 BNOX JEWELRY STUDIO: A tradition of exceptional jewelry inspired by the majestic bluffs, artful beauty awaits you. 108 Cedar Street, PePIN, WI 715-279-1113, @bnoxpepin.com, www.bnoxpepin.com. By appointment only, watch Facebook for events.

27 Homemade Café
809 Third Street, PePIN, WI

28 PePIN Motel
305 Elm Street, PePIN, WI

29 Lake PePIN Campground
1010 Locust Street, PePIN, WI

30 Family Dollar
1229 Third Street, PePIN, WI

31 Soaring Eagle Hot Air Balloon Museum
211 Oakwood Street, PePIN, WI

32 COUNTRY STOP OF PEPIN: From seasonal produce to home décor to patio furniture, from whimsical to practical, The Country Stop of PePIN is a fun stop on the Great River Road. Corner of State Road 35 & County Road CC, PePIN, WI 715-442-2429, www.pepincountystop.com

33 VILLA BELLEZZA WINERY & VINEYARDS: A classical Mediterranean style winery, restaurant and event complex, featuring award-winning wines crafted onsite with locally grown grapes. Experience Villa Bellezza and transport yourself a world away. 1420 Third Street, PePIN, WI 715-442-2424, www.villabellezza.com

34 PEPIN GUEST HAUS: Cozy yet modern and fresh loft, beautiful views of Lake PePIN, walking distance to everything in town. 1485 First Street, PePIN, WI, PePINGuestHaus@gmail.com, www.PePINGuestHaus.com, www.VRBO.com

—Outside Village Proper—

35 PEPIN'S RUSTY PEDDLER: Vintage to new, unique home décor and thoughtful gift items that will delight you. N1085 Sand Ridge Road, PePIN, WI 715-441-0560, on Facebook @ PePIN's Rusty Peddler

36 The Hidden Meadow & Barn
W9602 Balsam Lane, PePIN, WI

37 Little Plum Place
W8851 County Road N, PePIN, WI

PePIN's Rusty Peddler

A DELIGHTFUL NEW EXPERIENCE OF RUSTY, VINTAGE AND RE-PURPOSED IDEAS BY LOCAL ARTISTS AND UPVING CREATORS FROM THE REGION.

"Rusty Peddler" is your Great River Road stop. Just off Lake St. in PePIN. 715-441-0560

N1085 Sand Ridge Rd. PePIN, WI

Mon-Thursday
Fri-Sat: 12-4pm & Sun. Noon-5pm

TRIPLE J WESTERN SHOP LLC

Triple J is for the farmer, rancher, cowboy, cowgirl, Advocate or those that love western fashion! We offer industry favorites like Kimes Ranch, Double H + Justin Boots, and more!

KEEP IT WESTERN

210 Lake Street PePIN, WI
www.triplejwesternshop.com

NELSON

1 TOWNSHIP 23 DISTILLERY: A farm family legacy, aged six generations, has now been redefined and found in spirits. W2363 Co Rd D, Nelson, WI

2 Thrive! Park
E298 Cleveland St., Nelson, WI

3 Grace Lutheran Church
8311 Lincoln St., Nelson, WI

4 Nelson Main Street Liquor Stop
218 N Main St., Nelson, WI

5 J & J BBQ & Catering/Laura's Treasures
208 N Main St., Nelson, WI

6 Top Hat Bar
N204 N Main St., Nelson, WI

7 Bank of Alma
N104 N Main St., Nelson, WI

8 Handy Mart
110 WI-25, Nelson, WI

9 Nelson Hotel Bar & Grill
114 S Main St., Nelson, WI

10 Nelson Cheese
S237 WI-35, Nelson, WI

11 Twin Bluff Bar
274 S Main St., Nelson, WI

12 Beth's Twin Bluff Café
S286 WI-35, Nelson, WI

13 Forget-Me-Not Gift Shop
S290 WI-35, Nelson, WI

14 Traynor's Fireworks
N113 N Main St., Nelson, WI

15 Nelson Discount Liquor
N Main St., Nelson, WI

—Outside of Village—
Stone Barn Pizza
S685 Co Rd KK, Nelson

BARN AGAIN LODGE: A beautiful full-service venue offering indoor and outdoor spaces for your wedding or event, accommodates large parties. S683 Lovely Road, Mondovi, WI 715-946-3443, barnagainlodge@gmail.com, @BarnAgainLodgeWI

7 of the Midwest's Best Event Venues

The soaring bluffs, gentle blue waters, gliding eagles and the site of sails in the wind all help make the Westcoast of Wisconsin the perfect destination for your special event. Weddings, reunions, events, and gatherings at these nine spots are sure to make memories. The locales run the gamut from high end elegant to laid back outdoor venues, all of them magical.

Villa Bellezza: What could be more romantic than escaping to an Italian village to get married? To meet in a stone tower for your first look. To share vows in a Roman temple surrounded by vineyards. To enjoy the magical spaces of your private Villa for wine, dinner, and dancing. To escape for moments on the piazza and romance under the stars. They look forward to you bringing your family and friends for your wedding at Villa Bellezza. Celebrate your love in a romantic place that will continue to be a part of your life. Return throughout your life to experience our small Italian village and to relive your wedding day. The villa has both indoor and outdoor venues available with exquisite facilities and great wine to boot at the vineyard. <https://www.villabellezza.com>

Hidden Meadow & Barn: Pure enchantment... That's what Hidden Meadow offers. Tucked away in the valleys of Pepin, Wisconsin, get lost in the rustic romance of The Hidden Meadow and Barn. From the moment you turn down the drive your heart will swoon over the incredible scenery that surrounds

you. From the tree lined drive to the rolling hills of Back Valley, the stunning round barn and the magical ceremony location, The Hidden Meadow and Barn is what dreams are made of.

Liberty Tree Farm: Events come in all shapes and sizes. Liberty Tree Farm has the flexibility and capability to personalize your occasion. From intimate gatherings to large weddings, we can design an event that's right for you. Located just outside Stockholm, WI along the Great River Road. With scenic views of the Mighty Mississippi, rolling bluffs/tops and charming river towns around every corner, the drive alone is reason to visit.

Twin Bluff Farms: Located in picturesque Stockholm, Wisconsin on the bluffs providing breathtaking views overlooking Lake Pepin on the Mississippi River. The venue boasts both indoor and outdoor options for your ceremony and reception. The breathtaking location allows you to be surrounded by endless photo opportunities with lake views, groomed outdoor ceremony space overlooking the river, covered pavilion with an outdoor kitchen, an orchard, vineyards, gardens, and many beautiful places to wander. Included with your booking is a bridal suite, commercial kitchen for your caterer, portable bar, sound systems, portable heaters, fire pits, tables, chairs, and linens. Stir up the excitement by letting them host your rehearsal dinner as well! Available for other events too. Open year round! Explore all the offerings at <https://twinblufffarms.com>

Maiden Rock Retreat: Maiden Rock Retreat offers a unique event venue on beautiful Lake Pepin. The building was built as a creamery in the early 1940's and the owners have maintained as much of the original character as possible while creating comfortable spaces. Throughout the building guests will find details that won't be found in modern structures, making your event or vacation rental a memorable experience. The venue offers soaring spaces, kitchen and dining areas,



Villa Bellezza Winery - Pepin

lounge and stage and available lodging all in house. The event space comfortably handles groups of up to 75 people. Discover more at <https://maidenrockretreat.com>.

Maidenwood Weddings + Events: Nestled in the bluffs between Maiden Rock and Stockholm, in Western Wisconsin, Maidenwood is a wedding and event center that sits on a 40-acre nature reserve with views of Lake Pepin on the Mississippi River. Maidenwood is an idyllic setting for your event. With stunning views of woodland forests,

wildflower meadows, bluffs, and ridges, Maidenwood offers exclusive amenities for up to 200 guests and the freedom to roam throughout the property to capture the perfect photos for your big day. Choose from a wildflower-filled wedding circle with lake views, a romantic pine grove setting or the beautiful white barn. Learn more at <https://maidenwoodevents.com>.

Historic Stockholm Opera Hall: The Opera Hall Event Center may not do weddings, but they are there to help with all kinds of celebrations and parties. From groom's dinners, family reunions, and corporate meetings, the historic space is perfect for your get together. Located above the famous Stockholm Pie Company, the Opera Hall can provide a lovely location, delightful repasts, and great memories. www.StockholmPie.com

The Stone Barn: You can feel the love and warmth of their place with the kiss of color & hugging hills that surround the property outside of Nelson. 35 acres with a pond, lawn, forest, and rustic outbuildings that can perfectly sit in the backdrop of your big day. The wedding barn was restored in 2015 and has a unique ambiance.

Barn Again Lodge: About 35 minutes from the river, you will find Barn Again Lodge. Barn Again Lodge is a beautiful ranch property and waterfront wedding venue in Mondovi, Wisconsin. Surrounded by rolling hills and farmlands, this beautiful barn and venue offers everything a nature-loving couple needs to celebrate their big day in style. Barn Again Lodge

offers several indoor and outdoor spaces for your wedding and can accommodate large parties. The staff works one on one with you to pin down every detail, until your dream romantic, rustic wedding is complete. Whether you're planning an intimate affair or a grand farmhouse soiree, Barn Again Lodge will help you turn your big day into the perfect day. www.facebook.com/BarnAgainLodgeWI

Specializing in Weddings & Events
Serving WI & MN

Est. 2019

Love You More Floral Design

Sandy Fritze Florist
Stockholm, WI
612-578-8505
@loveyoumorefloral
loveyoumorefloral@gmail.com

TWIN BLUFF FARMS
N2089 Twin Bluff Lane, Stockholm WI 54679 | twinblufffarms.com | 612-364-7311
Host your next party, corporate event, class or wedding with us!

WEDDING & EVENT VENUE • INDOOR & OUTDOOR MARKETS • HOMEMADE JAMS & JELLIES

Find our jams & jellies at Stockholm Pie & General Store!

MAIDENWOOD

www.maidenwoodevents.com



Maiden Rock Retreat.com

Event Venue - Vacation Rental

W3487 State Rd 35
Maiden Rock, WI 54750
(608)790-5253

Renovated 1940s creamery, offers a unique setting for: weddings, rehearsal dinners, family vacations, etc.

Located on Lake Pepin...Make memories here!

facebook
instagram

Wines, Spirits and Libations on The West Coast of Wisconsin

The Wisconsin shores of Lake Pepin have become known as a delightful destination for folks looking for world class wine and cider. In recent years that tasty journey has grown to include a variety of local producers and deeply local and artisanal offerings of libations of every sort.

The rugged sandstone bluffs and sandy coulees have given the area a distinct terroir for its local artisanal producers. The oldest artisanal maker in the area is the venerable **Maiden Rock Winery and Cider**. Maiden Rock has been crafting award winning European style hard ciders and fruit wines for nearly 20 years. The bluff top location lends itself perfectly to growing classic English cider apples and a variety of well-known modern fruits as well. You can taste the exceptional hard ciders at the Winery and Cider above Stockholm at W12266 King Ln, Stockholm, WI. Check their website or Facebook for hours, or give them a call at (715) 448-3502.

Just down the great River Road in the Village of Pepin stands the breathtaking **Villa Bellezza Winery**. The majestic buildings, tower and piazza bring a person to a different place - Italy in the case. Villa Bellezza handcrafts a series of exceptional wines using all locally sourced grapes. The tasting room is open year around, along with the charming Italian inspired restaurant. The owners and winemakers know their craft very well - winning awards all around the world for their wines. It is also an award-winning



Chef Shack - Bay City

New to the "Coast" is **Township 23 Distillery**. Village Edge Farms, the family farm of the owners of the distillery, has passionately farmed the land just below the picturesque backdrop of the Mississippi River bluffs. Today that same passion goes into making their products. A "field to glass" distillery, where spirits are produced from the organic crops grown right on the homestead. They host an ever-changing variety of craft cocktails in the cozy tasting area, all crafted from their fine spirits. You can learn more at www.township23distillery.com and you will find them at W2363 County Rd D, Nelson, WI.

The area is also host to a delicious list of locations offering exceptional craft cocktails and wine. **Chef Shack** in Bay City offers world class cocktails and wine list (www.chefshackbaycity.com). **Humble Moon** in Stockholm offers a creative selection of cocktails in its charming space (www.humblemoonsalon.com). **Stockholm Pie's Marketplace** features a delightful selection of Wisconsin made wines and beers available by the bottle or at the wine/tasting bar (www.stockholmpie.com). **The Palate** in Stockholm offers an extraordinary selection of wines from around the world, by the glass and the bottle (www.thepalate.net). **RiverTime Wine Bar** in Pepin offers a well-rounded selection of wines and beers along with live music (www.facebook.com/RiverTimePepin). **The Pickle Factory** has a popular bar with a great selection of wines, beers and cocktails (www.pippinpicklefactory.com).



Villa Bellezza Winery - Pepin

RiverTime
Wine-Beer-Amusements
418 Second Street
Village of Pepin, Wisconsin
www.RiverTimePepin.Love

TOWNSHIP 23 DISTILLERY
NELSON, WISCONSIN

A farm family legacy, aged 10 generations, has now been redefined and found in spirit.

Township 23 Distillery uses only the softest organic grains from the heart of Village Edge Farms to give you the ultimate hand in glass experience.

Enjoy delicious craft cocktails in our warming cocktail room or at our scenic patio beneath the bluffs.

Hours of Village Edge Vodka & "By Golly Gin"

W2363 County Rd D, Nelson, WI
Tel: 735-972-6992

Learn, Visit & Follow Along!

www.township23distillery.com
facebook.com/township23distillery
[instagram.township_23_distillery](https://instagram.com/township_23_distillery)



VILLA BELLEZZA WINERY

AN ITALIAN WINE EXPERIENCE IN PEPIN, WISCONSIN

Wine Tastings | On-Site Italian Restaurant | Wedding Spaces

OPEN ALL YEAR

www.VillaBellezza.com