

2023 EVENTS & HAPPENINGS

MARCH

Saturday, March 18, 2023 2PM
Annual St. Patrick's Day Parade Stockholm, WI

APRIL

Saturday, April 15, 2023
Annual SPRING Flood Run AREA-WIDE
One of the largest and oldest motorcycle charity runs in the country, working to raise money for Gillette Children's Hospital

MAY

Friday, May 5, 2023
100 Mile Garage Sale AREA-WIDE

JUNE

Saturday, June 3, 2023
SPRING Fresh Art Tour AREA-WIDE
Studio and gallery tour throughout the picturesque villages and countryside of Pepin, Pierce and Buffalo counties. www.freshart.org

Saturday, June 3, 2023

Tour de Pepin AREA-WIDE
16th annual event offering cycling enthusiasts the opportunity to enjoy the captivating terrain and historic towns that line Lake Pepin along the Great River Road. https://lakecity.org/news-events/tour-de-pepin.

Saturday, June 10, 2023

Scandihoootenanny Stockholm, WI

Friday, June 16, 2023

Pepin Trailblazers Barrel Racing Pepin, WI

Friday, June 30, 2023

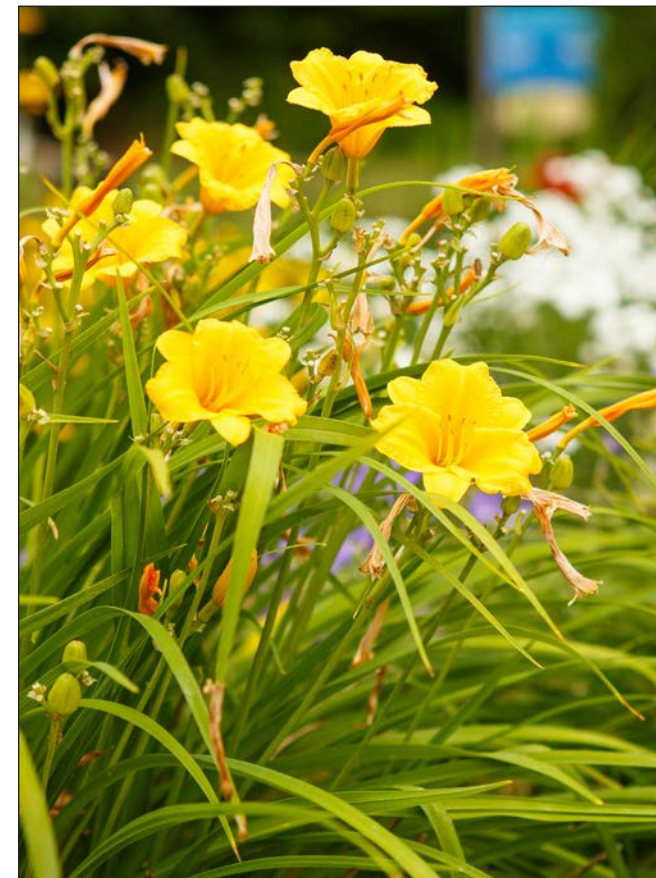
Party in the Park Maiden Rock, WI

JULY

Tuesday, July 4, 2023 1PM
Annual Independence Day Parade Stockholm, WI

Saturday, July 15, 2023 10AM-5PM

49th Annual Stockholm Art Fair Stockholm, WI
www.stockholmartfair.com



AUGUST

Thursday, August 3 – Sunday, August 6, 2023
Buffalo & Pepin County Fair Mondovi, WI
Buffalo County Fairgrounds

SEPTEMBER

Saturday, Sept. 9 – Sunday, Sept. 10, 2023
Laura Days (Laura Ingalls Wilder Days) Pepin, WI
Family event featuring arts and educational entertainment based on the early American pioneer experience of storybook author Laura Ingalls Wilder. Please check website for updates. www.lauradays.org

Saturday, September 16, 2023

Annual FALL Flood Run AREA-WIDE
One of the largest and oldest motorcycle charity runs in the country, working to raise money for Gillette Children's Hospital

OCTOBER

Saturday, October 7, 2023
FALL Fresh Art Tour AREA-WIDE
Studio and gallery tour throughout the picturesque villages and countryside of Pepin, Pierce and Buffalo counties. www.freshart.org

NOVEMBER

Friday, Nov. 3 – Sunday, Nov. 5, 2023
Women's Weekend on the West Coast AREA-WIDE
On the West Coast of Wisconsin - Bay City to Nelson
Visit www.stockholmwisconsin.com for details

Holiday Along the River
NOVEMBER – DECEMBER 2023

Saturdays & Sundays, Nov. & Dec. 12PM-5PM
Villa Bellezza Outdoor Christmas Market Pepin, WI
www.villabellezza.com

December 2023 – March 2024
(weather dependent) Rush River Ice Sculptures Maiden Rock, WI

Saturday, December 2, 2023
Evers Farm Holiday Barn Pepin, WI

TBD
Old Fashioned Christmas Maiden Rock, WI

Saturdays, December 2, 9 and 16, 2023
Holiday Jul Market Stockholm, WI
Stockholm Opera Hall Event Center



Saturday, December 2, 2023

God Jul: A Swedish Christmas Stockholm, WI
A celebration filled with tradition! Visit with our very own Jultomte & Mini Tomte, plus enjoy photo opportunities, unique gifts and holiday treats!

Saturday, December 9, 2023

Handmade Holiday Stockholm, WI
Fill your holiday with joy and your wishlist with unique and lovely things from the merchants of the village. Stop in many of the shops and make your own handcrafted gifts and decorations. Fun for kids and adults! Visit a quaint holiday Jul Market at The Stockholm Opera Hall event center, filled with delightful gifts.

Saturday, December 16, 2023 4PM

Fires of Stockholm Stockholm, WI
Celebrate the Winter Solstice! See the village lit as if in a magic fairy tale as the streets are lined with luminaries, ice candles, torches and bonfires as the sun wains, culminating in a Solstice Celebration. Lighting starting at 4PM, followed by fire events.



JANUARY – 2024

Camp Pepin YMCA Winterfest Pepin, WI
Date TBD

FEBRUARY – 2024

Pepin Lions Club Ice Fishing Contest Pepin, WI
Date TBD

Please visit
www.thewestcoastofwisconsin.com
for more information and a full list of activities!

Photo Credit: Scandiho - Stockholm, Wis.



THE TRAVELER

2023 EDITION

FREE



A ribbon of a road hugs the contours of the soaring bluffs alongside the wide expanse of water - Lake Pepin on the Mississippi. The road leads from charming village to charming village with picture perfect expanses of the Great River around every corner. This magical place is known as The West Coast of Wisconsin. It's a very special place, steeped in history and legend, filled with charm and character, and home to a vibrant food scene, a deep artistic culture and scenery and outdoor adventures.

The famed poet, William Cullen Bryant once said, "Lake Pepin ought to be visited by every poet and painter in the land." Renowned writer

Susan Allen Toth once wrote about the West Coast of Wisconsin. "DENSELY wooded bluffs tower 400 feet over one of the world's great rivers; timber rattlesnakes nest in rocky outcrops while bald eagles soar overhead; hidden behind the bluffs, small farms nestle among green hills, shady pastures and clear trout streams. To people who think of the Midwest as endless cornfields under a flat horizon, Lake Pepin, on the upper Mississippi River between Minnesota and Wisconsin, is a stunning surprise" Even Mark Twain got caught up in the beauty of the area when he stated "And that grandest conception of nature's works, incomparable Lake Pepin--these constitute a picture whereon the tourist's eye may gaze uncounted

hours, with rapture unappeased and unappeasable" If you find yourself fortunate enough to spend a few hours, days, or a lifetime on the shores of Lake Pepin you will find a place that is unexpected in its beauty and character. Take time to explore the famous cafés, bakeries, and wineries. Delve into the shops filled with local charm and worldly sophistication. Spend the day watching eagles, riding the blue bikes of Stockholm, fishing along the shores of beautiful rivers, sailing the wide expanse of Lake Pepin, or cruising the winding ribbons of roads that curl through the soaring bluff. No matter what you choose, you will feel the magic of the West Coast of Wisconsin! ❄️



West Coast of Wisconsin "Foodie" Trail

The Great River Road along Lake Pepin is known for its scenic drives, soaring bluffs and quaint villages. The stretch from Bay City to Pepin is lovingly referred to as "The West Coast of Wisconsin", with its majestic vistas and charming, almost maritime feel of its villages. There have long been a few well-known dining stops along the beautiful roadway, but it has now become a serious foodie destination with world-class, award-winning spots that make the trip worth a few days of gastronomic exploration. Start at the top of Lake Pepin and work your way down for truly exquisite foodie experiences. The start of the trail is approx. 60 miles from Minneapolis on one of the most beautiful stretches of the Mississippi River along the shores of Lake Pepin.

– Bay City, WI –

The gateway to Lake Pepin, the village of Bay City is a quaint, quiet spot with a stunning location on the Great River with the first trail destinations.

Chef Shack: Tucked off WI Hwy 35 in Bay City you will find Chef Shack. Carrie Summer and Lisa Carlson crafted this delightful "Ranch Rustic Country French" inspired weekend dining spot to entertain guests with exquisite food, influenced by their travels, but always based in extraordinary French based technique. The wine list is top notch, as are the cocktails. And do not miss the desserts, all handcrafted in house by Chef Carrie. Chef Lisa has been a multi-year Semifinalist for the James Beard Award. Chef Shack

Photo Credit: Chef Shack - Bay City, Wis.

has been named one of the 50 best Minneapolis restaurants by Mpls. St Paul Magazine and is a Travel and Leisure favorite. 6379 Main St, Bay City. <http://chefshackbaycity.com> (715) 594-3060

Sunrise Coffee: Beautifully crafted espresso drinks and locally fresh baked goods. You will also find a nice selection of breakfast and lunch items. Great coffee, seriously nice folks. W6442 State Road 35, Bay City. <https://sunrisecoffeeon35.com>. (715) 941-1999

– Maiden Rock, WI –

Downriver from Bay City is the Village of Maiden Rock. Barely two streets wide, it clings to the bluffs on the shores of the lake. Best known for its bars and bakery, it has become alive with new shops and galleries and the next trail destination.

The Smiling Pelican Bake Shop: Sandra Thielman's Smiling Pelican is a small but immensely popular bakery. Their made from scratch treats are crafted with care in small batches, are well known throughout the area. They have a devoted following that you can find lined up at the door, anticipating the delights about to be consumed. Best to check their Facebook page for up-to-date listings of hours. W3556 WI-35, Maiden Rock, WI 54750

– Stockholm, WI –

Six miles past Maiden Rock you will find yourself in Stockholm, a tiny village of 78 permanent residents that packs a huge amount into its two streets of shops and eateries. It is well known as a famous day trip destination, a Midwest Living "Best of" and named "The Coziest Small Town in America".

Stockholm Pie & General Store: On the main corner of the Great River Road and Spring Street in this extremely popular destination village you will find the famous and deeply loved Stockholm Pie. The shop is known for its made from scratch, just like grandma made food, especially the pie... lots of pie, really good pie. In addition to the pie, the shop is

loved for its delicious food – sandwiches, salads, and savory pies. River Travel Magazine named Stockholm Pie and General Store Best Café on the Mississippi River, and Best Pie in the country. USA Today said it is one of the 18 legendary pie shops in the US. Road-Food Guide called it one of the 100 best places to eat in America. Awarded with numerous nods as best pie



Photo Credit: The Palate - Stockholm, Wis.

in Wisconsin and one of the best in the country. Lines can be sizable on weekends but oh so worth the wait. Best to call ahead and pre-order whole pies or if you have your heart set on a particular slice. Beautiful garden seating in addition to inside the classic building. Ask about the Stockholm Opera Hall for group events and check out Wisconsin Foods & Sundries for a taste of Wisconsin & Scandinavia with wine, beer and cheese sampling, bookstore and foodie treats galore. Open year around but check Facebook for hours. N2030 Spring St, Stockholm WI 54769. (715) 442-2266 www.stockholmpie.com

The Palate: The Palate is best known as a charming French inspired kitchen store and cooking school where you will find delectable house baked goodies. They have recently added delightful outdoor seating in the back garden and sidewalk café style seating in the front gardens and are featuring a truly exceptional selection of repast in the form of beautifully curated cheese platters with selections of world class wines from the store. Open into the evening, it is a gentle, lovely way to end your visit to Stockholm. W12102 WI-35, Stockholm, WI 54769 (715) 442-6400. www.thepalate.net.

Hop Dish and Vine & Little Lark Bakery: Tucked in a beautiful courtyard garden. The menu is a lighthearted, fun seasonal menu. Adjacent is the Little Lark Bakery. All this in a chill gastro beer garden vibe including regional beer, fine wines, and live music. N2047 Spring St. Stockholm, WI.

– Pepin, WI –

Six more miles downriver is the Village of Pepin. Pepin is the largest of the four villages on the lake with almost 900 folks! Known for its beautiful marina, and as the birthplace of Laura Ingalls Wilder, it is even better known now for its foodie destinations.

Harbor View Café: The Harbor View is the grande dame of the foodie destinations along the trail. It has long set the

standard in the Midwest for destination dining. The café sources locally and has a highly regarded wine cellar. As suggested by the name, the café sits on the beautiful marina in Pepin. The café does not take reservations and the wait can be substantial on busy summer weekends, but get a glass of wine, sit outside, listen to music and watch the Great River meander by. 314 1st St, Pepin, WI 54759

Villa Bellezza Winery: Villa Bellezza is best known for its award-winning wines and its breathtaking Italian village like campus – it really does feel like you have escaped to Italy without the flight. Even the chef is a true Italian original. Antonio Ceconi leads the kitchen at the winery's Country Italian



restaurant, Il Forno. Wood fired pizza, pasta and panini make up the menu. Their cheese and meat plates are heavenly and pair so beautifully from the large range of truly exquisite wines from their own cellars. All of this is best experienced on "La Piazza Bellezza", it's like a small Italian town. It is a great place to watch people while enjoying your wine and food. In summer al fresco dining lasts into the evening under café lights above. In winter, al fresco dining is under heated porticos with chairs covered in furs to help stay warm. Quite the delicious experience. You may also want to explore their cooking school La Scuola, a participation cooking school taught by chef Antonio Ceconi. This year you will be able to



Photo Credit: Villa Bellezza - Pepin, Wis.

experience their new outdoor kitchens for the school and dining. Open year-round, check Facebook for hours. 1420 3rd St, Pepin, WI 54759. www.villabellezza.com. (715) 442-2424

– Nelson, WI –

The village of Nelson lies at the crossroads of Wisconsin and Minnesota. Take a left to keep following the Wisconsin Great River Road. Go straight and you'll find yourself in Minnesota!

J&J Barbeque: Classic, delicious, and fun describe J&J BBQ. This family-owned joint smokes up some of the best ribs, chicken, and brisket you will find anywhere on the Mississippi. Their bar is famous for the Bloody Mary, and you will find live entertainment at times also. It's worth the wait for the amazing food! 208 N Main St, Nelson, WI

Nelson Cheese: An area favorite. Once a cheese factory now a delightful gourmet & wine shop featuring tasty sandwiches and pizza along with ice cream cones from a top-notch regional ice cream company. Don't miss the fireside wine

tasting room and outdoor, dog friendly patio. S237 State Road 35 S, Nelson, WI.

Stone Barn Pizza: Farm Pizza is a big deal, particularly in our area, where it all kind of started with A to Z farms many years ago. Stone barn crafts amazing cracker thin crust pizzas with farm fresh ingredients. Find them on Facebook for hours. S685 Co Rd KK, Nelson, WI.

WORTH THE TRIP: Mondovi, WI

Barn Again Lodge: It is about a half hour drive to get to Barn Again in Mondovi WI, but it's special enough to warrant the drive. Only open for pizza on Wed in the summer, this beautiful lodge and event center knows what they are doing with the pizza. Creative combinations abound and you will find great appetizers and other foods for the non-pizza folk among us. S683 Lovely Rd, Mondovi. You can get more info at www.facebook.com/BarnAgainLodgeWI or call them at (715) 946-3443. Enjoy the stunning drive and the great pizza. ❁

The Fish Fry & Wisconsin-Made Beer: A Wisconsin Tradition

The classic Wisconsin fish fry is a significant part of the state's food culture. Ask any Wisconsinite about their favorite, and you're bound to get a detailed list.

The tradition goes back about a century. With the abundance of freshwater fish, a plethora of great little bars and grills and the edicts about what should be consumed on a Friday, the tradition stuck.

Most places you will find a great local freshwater fish – walleye and perch – or these days cod is often on the menu. Batters are a deeply held secret – usually involving beer of some kind... it is Wisconsin after all. The classic is a deep-fried pile of crunchy battered fish, but now days almost all places will have a baked option on the menu. Sides of potatoes and the prerequisite coleslaw are almost as important as the batter. It could be hashbrowns, French fries, tater tots or baked, but there is always an abundance of potato. The slaw can be sweet and vinegary or creamy and spiked with horseradish. No matter what, it's delicious.

And to round it out, what better than a nice cold beer. In these parts you will find all the regular big brews no doubt. But if you want to be a real Wisconsinite for the evening then New Glarus or any local crafted beer is a must. New Glarus is almost as much a tradition as the fish. Only available in Wisconsin, it is the quintessential Wisconsin beverage.

The West Coast of Wisconsin is blessed with some great choices for your Friday night fish-athon. If you're in Bay City head on into The Outpost Bar and Grill for your fresh catch. In Maiden Rock you can fill your fried fish craving at The Six String Saloon. In Stockholm try out Humble Moon Saloon.

Pepin has a bunch of great options. Head into The Pickle Factory for a great fish fry and a whole bunch of other great food. Don't leave without trying the fried pickles! You will find them right on the water on 1st Street. Give them a call at 715-442-4400 for info. You can also find a darn good fish fry at Homemade Café, Captains Legacy, and the Garden Pub. ❁

Pepin's Rusty Peddler

N1085 Sand Ridge Rd. Pepin, WI
715-441-0560



The **Rusty Peddler**, a delightful new experience of rusty, vintage and re-purposed ideas by local artists and unsung creators from the region. A "Must See" on your Great River Rd outing. Just off Lake St. in Pepin.

May-Nov, Fri.-Sat. 10-4 pm & Sun. Noon-3pm

RiverTime

Wine ~ Beer ~ Amusements

418 Second Street, Pepin

RiverTimePepin.Love

PICKLE FACTORY

Bar & Grill
Pepin, Wisconsin

On Lake Pepin Open Year Round

205 First Street, Pepin, WI

Call us at 705-442-4400 or visit our website at

www.pepinpicklefactory.com for current hours

NOW OPEN: NEW! Wisconsin Food & Sundries Marketplace.

• Wisconsin Cheese • Wines • Beers • Foods & Sundries

MARKET SAMPLES DAILY!

WORLD FAMOUS PIE!

Cafe featuring the best of...

- Delicious Sandwiches
- Ice Cream & Soda
- Coffee & Espresso
- Salads & Soups
- Nostalgic Candies
- Wisconsin Cheese
- Incredible Pot Pies
- Gifts & Toys
- Wine, Beer & Sundries

...and of course World Famous Pie



www.stockholmpie.com
N2030 Spring Street | Stockholm, WI 54769 | (715) 442-5505

Historic Stockholm Opera Hall Event Center

- Events • Grooms Dinners
- Reunions • Parties

Catering, Wine & Beer, Desserts
N2030 Spring Street | Stockholm, WI 54769
(715) 442-5505

Brought to you by Stockholm Pie

www.stockholmpie.com

scandihoo™

NORDIC STYLE WITH A KICK



Traditional & New Nordic
Hygge Home
Unisex Accessories & Clogs

Visit our boutique in the heart of Stockholm!



@scandihoo_store
www.scandihoo.com
12092 Hwy 35
Stockholm, WI

A History of Lake Pepin

There is a spot where the great river widens and slows, as it has for tens of thousands of years. This mythical place is known as Lake Pepin. Many thousands of years ago, the great water stretched from the mouth of the Chippewa River to almost where St. Paul, Minnesota now stands. The lake today is 22 miles long and up to 2 miles wide – making it the widest natural spot on the mighty Mississippi River.

In the 1680s the French made headway into the area,

with Father Hennepin traveling through the region. He bestowed the name “*Lac de Pleur*,” or Lake of Tears, on the body of water after being kidnapped on the lake by Mdewakanton Dakota tribesmen. Around that same time, the decidedly more desirable name of Lake Pepin was given to the lake in honor of Jean Pepin, a famous French explorer who settled on its shores.

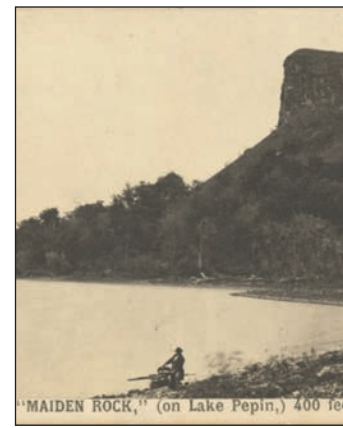
Over the years, small settlements along Lake Pepin grew into villages, each with its own distinct personality. The village of Nelson was settled in the 1840s and first named Nelson’s Landing. Stockholm was founded by Swedish settlers in 1854. Bay City was settled in 1855, Maiden Rock was established in 1857, followed by Pepin in 1860. The small villages prospered through logging, fishing, clamming, and farming. Large commercial fishing operations and ice harvesting were all part of the economy.

The Dakota’s social structure was one of kinship, strong family ties, and long-held cultural traditions. Their people held deeply spiritual beliefs and perceived the divine in all their surroundings. Careful stewards of the land, they consumed resources wisely and replenished what they used. Dakota beliefs and practices formed the foundation of their very survival.

In the 18th century, the French fur trade became a double-edged sword for the Dakota, simultaneously generating prosperity for their people while introducing an early threat to their existence through fierce competition for their homelands.

By the 19th century, the Dakota were further displaced by U.S. treaties that were written to make room for the flood of European settlers. As their people were exiled to the Great Plains, only a handful of Dakota families remained in this region.

The fortunes of the tiny villages waxed and waned over the decades, with most becoming decidedly sleepy by the 1960’s and 70’s. A rebirth started late in the 70’s as artists discovered the breathtaking landscape and began to move to the area. Soon tourists followed, and the West Coast of Wisconsin became a destination of five waterfront villages with thriving shops, restaurants, guest houses, wineries, and wedding venues – along with the abundant beauty of nature, making it an irresistible place to visit. ✿



In 1889, Congress allocated lands to the descendants of these remaining families, and those land allotments formed the foundation of today’s Dakota reservations. Slowly, the Dakota people began returning to these lands to build new lives.

Today, the Dakota people maintain many separate tribal governments scattered across reservations and communities throughout the Midwest. They work for rightful authority over their own lives and internal affairs and command a voice in issues of historic significance to their people. Dakota elders build awareness of their native traditions by carrying on and teaching cultural practices to new generations of Dakota. In their ancestral homeland of Minnesota there are four federally recognized Dakota nations; the nearest to Lake Pepin is the Prairie Island Indian Nation, created in 1889 in Red Wing, Minnesota. ✿

LAURA INGALLS WILDER MUSEUM

306 Third Street, Pepin, WI

2023 SEASON

May 1 through October 21

MUSEUM & GIFT SHOP HOURS:

10 am – 5 pm Daily – 7 Days per Week

Including Memorial Day, July 4th, & Labor Day

Visit Laura’s Birthsite

GPS coordinates: N3238 Co. Road CC, Pepin, WI

www.LauraIngallsPepin.com



Laura Ingalls Wilder

American author, Laura Ingalls Wilder, was born in 1867 in a small log cabin seven miles north of the village of Pepin. The years that Laura and her family lived in Pepin County were described by her as happy ones, surrounded by the love and security of her immediate and extended family.

In 1874 Laura’s family left the Big Woods of Wisconsin and moved to Walnut Grove, Minnesota. The years to follow included several momentous relocations as the family sought relief from crop failures and financial

hardships along their way. When Laura was 18 and living in DeSmet, South Dakota, she married a young homesteader named Almanzo Wilder. The Wilders’ daughter Rose was born the following year.

In later years when Laura and Almanzo were settled in Mansfield, Missouri, she wrote a memoir of her family’s early travels, recalling collective joys and sorrows as they toiled to build solid lives in unfamiliar places across the northern plains.

In 1931, Laura’s written memoir became the basis for a fictionalized manuscript of her real-life experiences as a young girl in the Big Woods of Wisconsin. In 1932, Harper & Brother’s Publishing released *Little House in the Big Woods*, tailored for a grammar school-age audience. After the book’s success came seven additional volumes, each capturing life in the various homesites where her family had settled along their journey.

After Almanzo’s death in 1949 Laura lived alone and spent her time visiting and actively corresponding with her friends and fans. She died at home on February 10, 1957, three days after her 90th birthday.

Another of Laura’s manuscripts about the early days of her marriage was discovered after her death and published in 1971. It is now marketed as the ninth volume in the *Little House Series*. Since the publication of *Little House in the Big Woods* in 1932, Laura Ingalls Wilder’s books have been continuously in print and have been translated into 40 languages. ✿

Wine, Cider & More on the Coast

The West Coast of Wisconsin has become known as a delicious destination for wine, cider and spirits. Along with world-class, locally grown wines you will find award winning hard ciders, fruit wines, spirits, wine bars and specialty wine and craft beer venues.

In Stockholm, just on top of the bluff (W12266 King Ln, Stockholm) is a beautiful expanse of apple trees that is home to Maiden Rock Winery and Cidery. The winery and cidery hand crafts delicious apple wines and is best known for their award-winning hard ciders. They grow an extensive array of old-

world cider apples which they craft into complex ciders that defy the mundane and lift the art of cider to a new level. You can sample the wines and ciders along with choice selections of other Wisconsin wines in their tasting room. In the quaint village of Stockholm, you will find Wisconsin Foods & Sundries (N2030 Spring St) and The Palate (W12102 WI-35). Wisconsin Foods & Sundries features the taste of Wisconsin with a selection of wines and cheeses and foods for sampling from across the state. You will also find a collection of some of the favorite brews from Wisconsin. The Palate takes you on an international voyage of exquisite wines and artisanal cheese boards to sample beneath the trees in their outdoor seating areas.



Photo Credit: Villa Bellezza - Pepin, WI

made in an Italian style that reflects the incredible venue itself. Imagine an Italian village with a delightful piazza.

Original Woodcut Printmaking

ART ORCHARD

Prints, Gifts, and more

kendragebbia.com
N2042 Spring St Stockholm, WI 54769



In Pepin, as you enter from the upriver side you can’t miss the stunning Villa Bellezza Winery (1420 3rd St). The winery crafts an array of gold medal award-winning wines, all from locally sourced grapes. Many are

Lose yourself in the vines and find yourself in the tasting room to explore the breadth of the wines they produce. RiverTime Wine Bar (418 2nd St) is a funky, friendly place filled with good vibes, local music and a wonderful selection of wines from around the world.

In Nelson, at the downriver end of Lake Pepin you can settle into the beautiful tasting room at Nelson Cheese (S237 WI-35). Order a glass from their extensive collection of wines from around the world. New to the area is Township 23 Distillery (W2363 Co Rd D). Artisan crafted spirits and cocktails await your discovery. ✿

Specializing in Weddings & Events
Servicing WI & MN

Est. 2019

Love You More Floral Design

Sandy Fritze Florist

Stockholm, WI
612-578-8505

@loveyoumorefloral
loveyoumorefloral@gmail.com

women owned authentic local



W12117 Hwy 35, Stockholm
Follow Us @IrisandOakStockholm
715-495-9121

ethically made art, gifts and consumables.



VILLA BELLEZZA WINERY

AN ITALIAN WINE EXPERIENCE
LOCATED IN PEPIN, WISCONSIN

Wine Tastings | On-site Italian Restaurant | Wedding Spaces
OPEN ALL YEAR

Located along the scenic Great River Road
www.VillaBellezza.com

Lodging on the West Coast of Wisconsin

Whether you're planning a quiet getaway to the West Coast of Wisconsin or scheduling an extended family gathering, we have a wide variety of lodging options to accommodate you.

If you're looking for a home-away-from-home where you can sleep in, go sightseeing and return whenever you like, perhaps the built-in hospitality of a vacation rental is for you. There are many options to choose from. Search any of the river towns on an online marketplace such as VRBO.com or Booking.com to select the right-size home for your group and the amenities to suit everyone's fancy.

For those of you who require comfort, convenience, and the need to be close to things, one of our local budget-friendly motels will be an excellent choice. To integrate social connection into your overnight stay, why not embrace the personal atmosphere of a bucolic inn where your host will make you feel comfortable and welcome.

And of course, there are no shortage of camping opportunities along the West Coast of Wisconsin! Get some headspace among the trees and sleep in a tent or watch TV in the comfort of your RV, we won't judge. Or add some novelty to your camping experience and try yurt glamping,

where the outdoors merges with a little lux. If you need housing for a large group retreat, family & friends' gathering or team building, a bunkhouse with clean showers, a comfy place to lay your head, and a food service package can be the answer at YMCA Camp

PePIN, with beautiful Lake Pepin at your doorstep. A quick Google search or exploration on an online marketplace for vacation rentals will supply you with information on the multitude of rental options in the area. Here are some of the area favorites:

MOTELS

PEPIN MOTEL
305 Elm Street, Pepin, Wisconsin
715-442-2012
www.lakepepincampground.com/motel.htm

An excellent choice for travelers visiting Pepin, this motel offers many helpful amenities designed to enhance your stay. Free wi-fi, air conditioning, refrigerator. For travelers arriving by car, free parking is available. Within walking distance of restaurants, entertainment, and Lake Pepin. The Little House Wayside is just 7 miles away.

PREFERRED VACATION RENTALS

PLEASANT CORNER SCHOOLHOUSE

Mackenzie Owens
W11798 Pleasant Corner Road, Stockholm WI
612-232-8801 mackenzie@ownmpls.com /
airbnb.com/h/pleasantcorner-schoolhouseretreat

MAIDEN ROCK RETREAT

W3487 State Hwy 35 - Maiden Rock, WI
608-790-5253; manager@maidenrockretreat.com / maidenrockretreat.com / Facebook

Unique lodging on the shore of Lake Pepin. Includes 2 suites, sleeping 6 in each, and 2 other private bedrooms with easy access for those with mobility limitations. Nine beds total, our venue sleeps up to 16. Built as a creamery in the early 1940's the property has been maintained with as much of its original character as possible while creating comfortable spaces. Throughout the building guests will find details that won't be found in modern structures, making vacation a memorable experience.

RIVERTOWN LANDING

W12084 State Hwy 35 - Stockholm, WI 54769
952-913-6502; info@rivertownlanding.com / rivertownlanding.com

Steps from downtown Stockholm and lakefront park. Two packages to choose from: Option A-Full access to house and grounds including large garden, large fire pit, outdoor patio, picnic tables, and large yard for recreational activities, access to 2 kayaks, full kitchen with countertop seating and dining room, two full baths, 2 living rooms, and 5 bedrooms. Sleeps 8-12. Option B-Upstairs quarters with private entry, 4 bedrooms, living room with TV, mini-fridge, and Keurig coffeemaker. Sleeps 6-8 comfortably.

PEPIN GUEST HAUS
1485 First Street Pepin, WI
PepinGuestHaus@gmail.com /
PepinGuestHaus.com, VRBO.com

Our cozy yet modern and fresh loft has beautiful views of Lake Pepin and is walking distance to everything in town. Across the street from Villa Bellezza, within walking distance to marina and Har-

bor View Café. For the comfort of our guests, we've made sure Pepin Guest Haus is nicely appointed. Wi-fi, Smart TV, Gas Fireplace and in-floor heat for winter visits, A/C & ceiling fan for summer visits, full equipped kitchenette, queen bed that sleeps 2, twin-size rollaway sleeps 1, super comfy couch with linens to make it up sleeps 1, fully appointed bathroom, iron and board extra linens, welcome book and guides, maps.

ART ORCHARD GALLERY & GUEST HOUSE
N2042 Spring St, Stockholm, 612-770-6741, www.kendragebbia.com, kendra.gebbia@gmail.com

The guest house is a charming spot in the heart of the village of Stockholm, adjacent to the Art Orchard Gallery and studio.

YMCA CAMP PEPIN

W10915 E Lake Dr Stockholm, (877) 395-7665, www.redwingymca.org/camps/camp_pepin, camp@redwingymca.org

On the shores of Lake Pepin, Camp Pepin offers camps



for kids and multiple options for lodging on site.

CAMPGROUNDS

PEPIN CAMPGROUND

1010 Locust Street - Pepin, WI
715-442-2012, www.lakepepincampground.com

Enjoy the peacefulness of the great outdoors just blocks from Lake Pepin. Our expanded campground has 200 campsites, laundry facilities and picnic areas. Laura Ingalls Wilder Park is one block away. Dining and entertainment within walking distance.

NELSON'S LANDING RV PARK

E203 Cleveland Street - Nelson, WI
507) 884-5017

Located in the heart of Nelson below the majestic Mississippi river valley bluffs and within walking distance of many amenities.

STOCKHOLM VILLAGE PARK

Spring Street - Stockholm, WI
Park Host 651-380-8654

Seasonal. No reservations; All camping spots on a first come, first served basis. Restrooms and potable drinking water are on site.

MAIDEN ROCK VILLAGE PARK

Hwy 35 - Maiden Rock, WI
Village Office: 715-448-2205; contactmaidenrock@gmail.com

Seasonal. Located across the railroad tracks from the business district. No reservations.

BAY CITY CAMPGROUND

W6490 Lake Pepin Blvd. - Bay City, WI
715-594-3229 or 715-594-3168

44 full hook-up sites and 6 tent sites. Pull-through dump station, rustic tenting, pavilion, public boat launch, public boat launch, sandy beach, and play area. ❁

Special Venues for Special Events in Life

to make dreams come true!

The soaring bluffs, gentle blue waters, gliding eagles and the site of sails in the wind all help make the west coast of Wisconsin the perfect destination for your special event. Weddings, reunions, events and gatherings at these nine spots are sure to make memories. The locales run the gamut from high end elegant to laid back outdoor venues, all of them magical.

Villa Bellezza: What could be more romantic than escaping to an Italian village to get married? To meet in a stone tower for your first look. To share vows in a Roman temple surrounded by vineyards. To enjoy the magical spaces of your private Villa for wine, dinner and dancing. To escape for moments on the piazza and romance under the stars. They look forward to you bringing your family and friends for your wedding at Villa Bellezza. Celebrate your love in a romantic

place that will continue to be a part of your life. Return throughout your life to experience our small Italian village and to relive your wedding day. The villa has both indoor and outdoor venues available with exquisite facilities and great wine to boot at the vineyard. <https://www.villabellezza.com>.

Hidden Meadow and Barn: Pure enchantment... that's what Hidden Meadow offers. Tucked away in the valleys of Pepin, Wisconsin, get lost in the rustic romance of The Hidden Meadow and Barn. From the moment you turn down the drive your heart will swoon over the incredible scenery that surrounds you. From the tree lined drive to the rolling hills of Back Valley, the stunning road barn and the magical ceremony location, The Hidden Meadow and Barn is what dreams are made of.

Liberty Tree Farm: Events come in all shapes and sizes. Liberty Tree Farm has the flexibility and capability to personalize your occasion. From intimate gatherings to large weddings, we can design an event that's right for you. Located just outside Stockholm, WI along the Great River Road. With scenic views of the Mighty Mississippi, rolling bluff-tops and charming river towns around every corner, the drive alone is reason to visit.

Twin Bluff Farm: Located in picturesque Stockholm, Wisconsin on the bluffs providing breathtaking views overlooking Lake Pepin on the Mississippi River. The venue boasts both indoor and outdoor options for your ceremony and reception. The breathtaking location allows you to be surrounded by endless photo opportunities with lake views, groomed outdoor ceremony space overlooking the river, covered pavilion with an outdoor kitchen, an orchard, vineyards, gardens, and many beautiful places to wander. Included with your booking is a bridal suite, commercial kitchen for your caterer, portable bar, sound systems, portable heaters, fire pits, tables, chairs and linens. Stir up the excitement by letting them host your rehearsal dinner as well! Available for other events too. Open year round! Explore all the offerings at <https://twinblufffarms.com>.



Photo Credit: Kim Andera Photography

Maiden Rock Retreat: Maiden Rock Retreat offers a unique event venue on beautiful Lake Pepin. The building was built as a creamery in the early 1940's and the owners have maintained as much of the original character as possible while creating comfortable spaces. Throughout the building guests will find details that won't

be found in modern structures, making your event or vacation rental a memorable experience. The venue offers soaring spaces, kitchen and dining areas, lounge and stage and available lodging all in house. The event space comfortably handles groups up to 75 people. Discover more at <https://maidenrockretreat.com>.

Maidenwood Weddings & Events: Nestled in the bluffs between Maiden Rock and Stockholm, in Western Wisconsin, Maidenwood is a wedding and event center that sits on a 40-acre nature reserve with views of Lake Pepin on the Mississippi River. Maidenwood is an idyllic setting for your event. With stunning views of woodland forests, wildflower meadows, bluffs, and ridges, Maidenwood offers exclusive amenities for up to 200 guests and the freedom to

room throughout the property to capture the perfect photos for your big day. Choose from a wildflower-filled wedding circle with lake views, a romantic pine grove setting or the beautiful white barn. Learn more at <https://maidenwoodevents.com>.

Historic Stockholm Opera Hall: The Opera Hall Event Center may not do weddings, but they are there to help with all kinds of celebrations and events. From groom's dinners, family reunions, parties and corporate meetings, the historic space is perfect for your get together. Located above the famous Stockholm Pie Company, the Opera Hall can provide a lovely location, delightful repasts, and great memories. www.StockholmPie.com

Pepin Hill Event Center: The rustic country scenery and intimate wedding chapel makes the event center the perfect location for private weddings. Couples looking for outdoor wedding venues will find the patio and pergola offers a beautiful setting for their special day. With on-site reception areas for up to 80 people, modern kitchens, a private preparation area for wedding parties, and more, Pepin Hill Event Center is a great option.

Barn Again Lodge: About 35 minutes from the river, you will find Barn Again Lodge. Barn Again Lodge is a beautiful ranch property and waterfront wedding venue in Mondovi, Wisconsin. Surrounded by rolling hills and farmlands, this beautiful barn and venue offers everything a nature-loving couple needs to celebrate their big day in style. Barn Again Lodge offers several indoor and outdoor spaces for your wedding and can accommodate large parties. The staff works one on one with you to pin down every detail, until your dream romantic, rustic wedding is complete. Whether you're planning an intimate affair or a grand farmhouse soiree, Barn Again Lodge will help you turn your big day into the perfect day. www.facebook.com/BarnAgainLodgeWI ❁

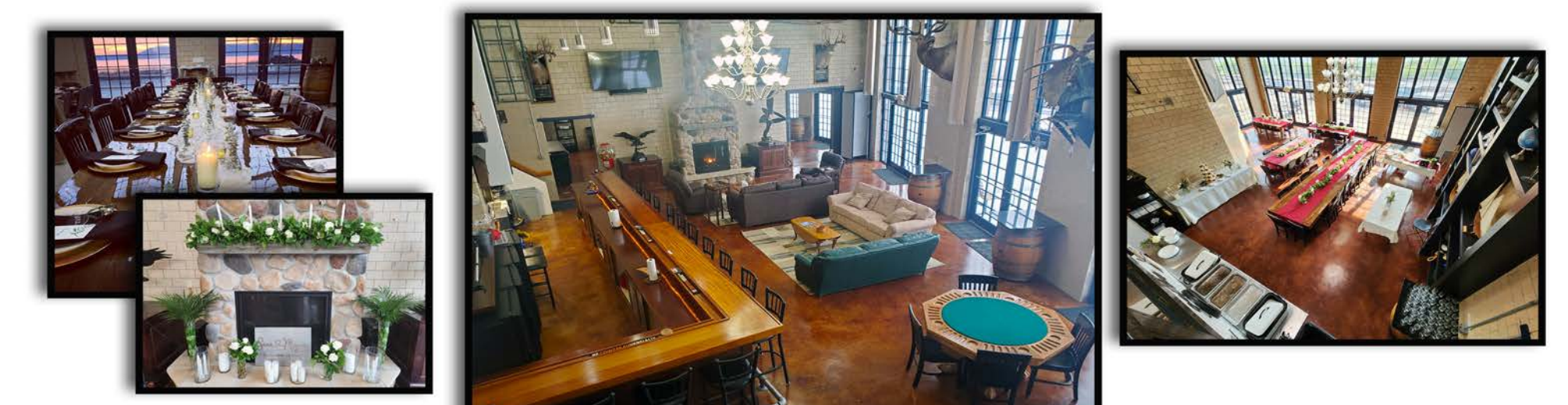


MAIDENWOOD

www.maidenwoodevents.com

PEPIN GUEST HAUS
Lake View Loft Vacation Rental
in Beautiful Pepin, WI
Rustic modern architecture, nautical décor, outdoor fire pit & patio, walking distance to all of Pepin's attractions
Perfect for couples, small families, small groups
PepinGuestHaus.com

the YMCA
YMCA CAMP PEPIN
UNFORGETTABLE SUMMER CAMP PROGRAMS
STUNNING GROUP RETREAT LOCATION
WWW.CAMPPEPIN.ORG



Maiden Rock Retreat.com

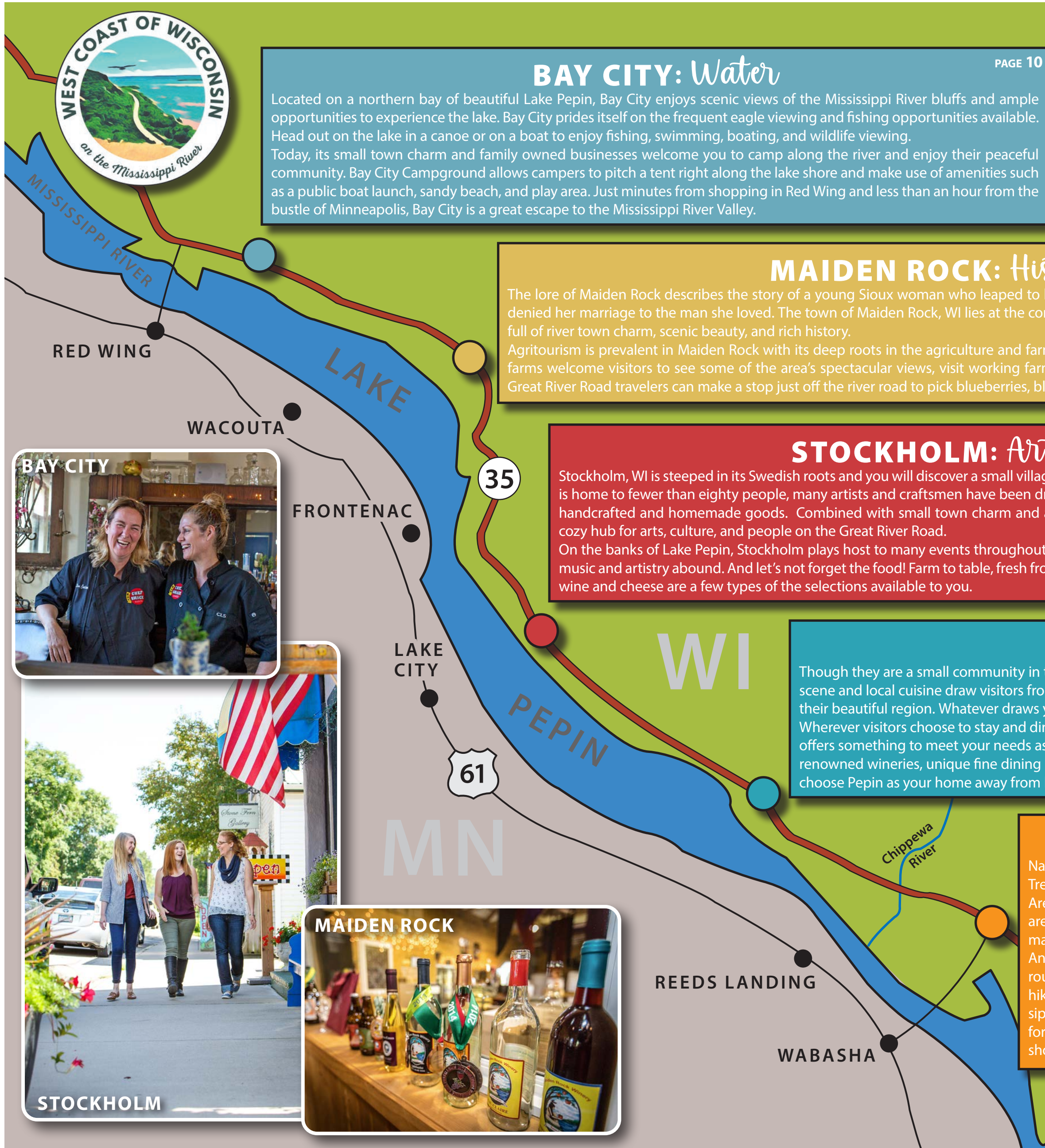
Event Venue - Vacation Rental

Renovated 1940s creamery, offers a unique setting for: weddings, rehearsal dinners, family vacations, etc.

Located on Lake Pepin...Make memories here!

W3487 State Rd 35
Maiden Rock, WI 54750
(608)790-5253





BAY CITY: Water

PAGE 10

Located on a northern bay of beautiful Lake Pepin, Bay City enjoys scenic views of the Mississippi River bluffs and ample opportunities to experience the lake. Bay City prides itself on the frequent eagle viewing and fishing opportunities available. Head out on the lake in a canoe or on a boat to enjoy fishing, swimming, boating, and wildlife viewing. Today, its small town charm and family owned businesses welcome you to camp along the river and enjoy their peaceful community. Bay City Campground allows campers to pitch a tent right along the lake shore and make use of amenities such as a public boat launch, sandy beach, and play area. Just minutes from shopping in Red Wing and less than an hour from the bustle of Minneapolis, Bay City is a great escape to the Mississippi River Valley.

MAIDEN ROCK: History

PAGE 10

The lore of Maiden Rock describes the story of a young Sioux woman who leaped to her death from the limestone bluff when her family denied her marriage to the man she loved. The town of Maiden Rock, WI lies at the confluence of the Rush River and the Mississippi and is full of river town charm, scenic beauty, and rich history. Agritourism is prevalent in Maiden Rock with its deep roots in the agriculture and farming industry. During the warmer months, regional farms welcome visitors to see some of the area's spectacular views, visit working farms, and check out local farm-grown products. Plus, Great River Road travelers can make a stop just off the river road to pick blueberries, black, red and white currants, and gooseberries.

STOCKHOLM: Arts

PAGE 11

Stockholm, WI is steeped in its Swedish roots and you will discover a small village with a big culture. Although the village is home to fewer than eighty people, many artists and craftsmen have been drawn there making Stockholm a haven of handcrafted and homemade goods. Combined with small town charm and a welcoming community, Stockholm is a cozy hub for arts, culture, and people on the Great River Road. On the banks of Lake Pepin, Stockholm plays host to many events throughout the year and with several events spaces, music and artistry abound. And let's not forget the food! Farm to table, fresh from the baker's hands, and French inspired wine and cheese are a few types of the selections available to you.

PEPIN: Stay, Eat, Repeat

PAGE 12

Though they are a small community in the Mississippi River Valley, Pepin, WI is big on hospitality, from unique lodging to excellent eateries. Each year the lodging scene and local cuisine draw visitors from all over, looking forward to cozy and unique places to stay and eat that are managed by locals with a passion for sharing their beautiful region. Whatever draws you to the West Coast of Wisconsin, Pepin is your home base for eating, sleeping, and repeating during your getaway. Wherever visitors choose to stay and dine, they'll experience one-of-a-kind small town hospitality and service. From historic to modern to lakeside, Pepin's lodging offers something to meet your needs as you relax and explore the shores of the Mississippi River. The local dining scene is something to be experienced, too, with renowned wineries, unique fine dining experiences, and charming cafes and pubs. Combined with the beauty of the area and the friendly community, it's easy to choose Pepin as your home away from home during your travels on the West Coast of Wisconsin.

NELSON: Nature

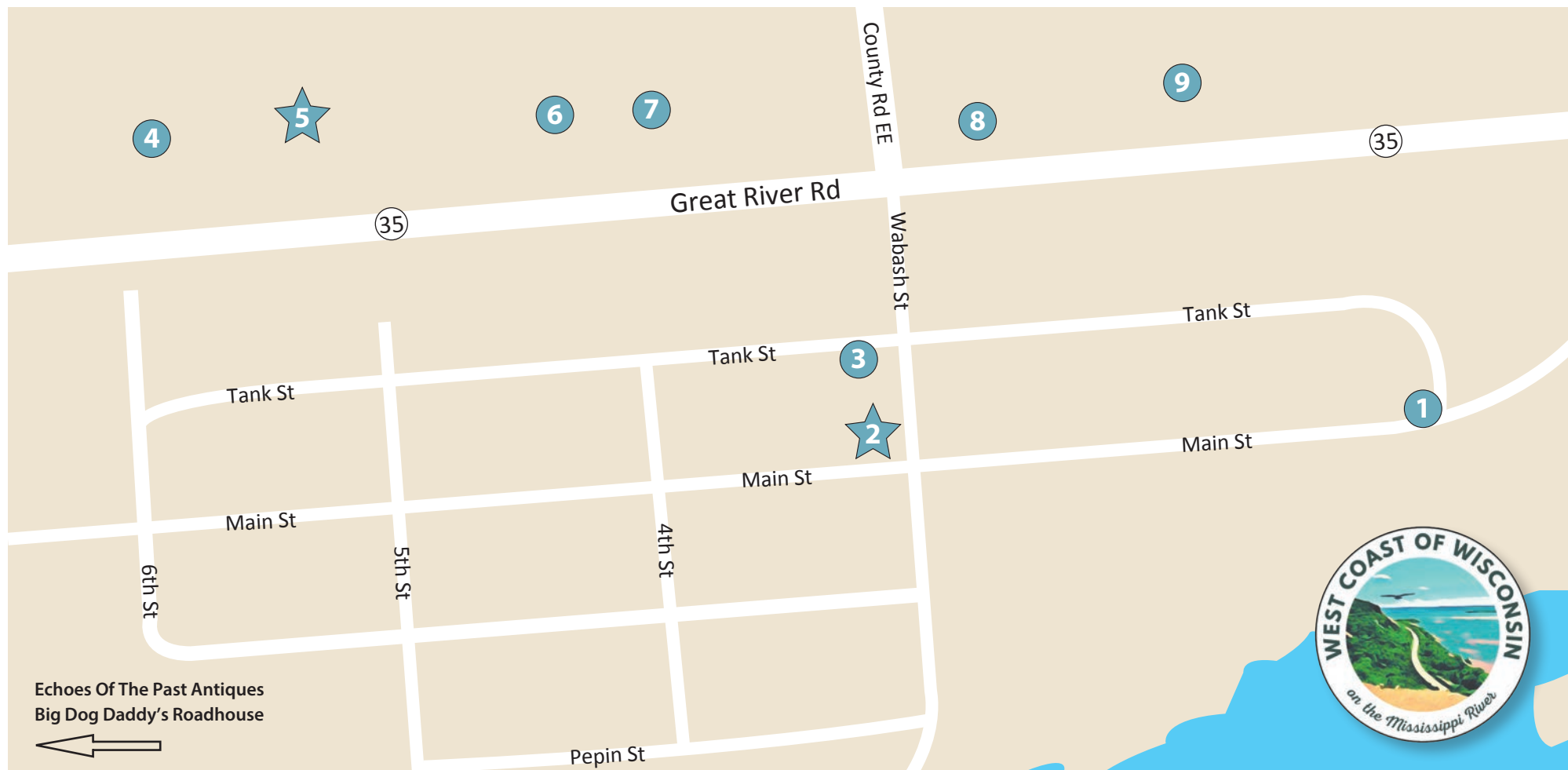
PAGE 13

Nature abounds in Nelson, WI. Surrounded on two sides by the Nelson-Trevino Bottoms State Natural Area and the Tiffany Bottoms State Natural Area, hiking, birding, fishing, and canoeing are all popular activities. The area features an abundance of wildlife and nearly every bird species that makes its home in Wisconsin can be found in the bottoms. Another prime location for outdoor adventurers is Thrive Park. Open year round for hikers and walkers, the public park features more than 25 acres of hiking roads and trails filled with wildlife and beautiful views of the Mississippi River Valley. After a long day in the outdoors, there are several choices for home-cooking styled meals in Nelson or maybe head out of town on a short drive for wood-fired pizza on a farm.

Welcome to the

West Coast of Wisconsin!





BAY CITY

- 1 Pierce County Historical Association**
W6321 Main St., Bay City, WI 54723
- 2 CHEF SHACK: James Beard nominated, French-inspired restaurant**
W6379 Main St., Bay City, WI
chefshack1@gmail.com
http://www.chefshackbaycity.com
(715) 594-3060
- 3 Thrifty Sisters**
N1231 Wabash St., Bay City, WI 54723

- 4 Outpost Bar and Grill**
W6454 WI-35, Bay City, WI 54723
- 5 SUNRISE COFFEE ON 35: Handcrafted coffee, great treats and lite fair**
W6442 WI-35, Bay City, WI 54723
sunrisecoffee35@gmail.com
(715) 941-1999
- 6 Handy Mart**
W6396 WI-35, Bay City, WI 54723
- 7 Sabe's Loft**
W6390 WI-35, Bay City, WI 54723

- 8 Old Stuff Antique Shop**
W6373 WI-35, Bay City, WI 54723
 - 9 Dollar General**
Highway 35, Bay City, WI 54723
- Outside of Village–
Echoes Of The Past Antiques
N1658 Cr-C, Bay City, WI 54723
Big Dog Daddy's Roadhouse
W7037 135th Ave, Bay City, WI 54723

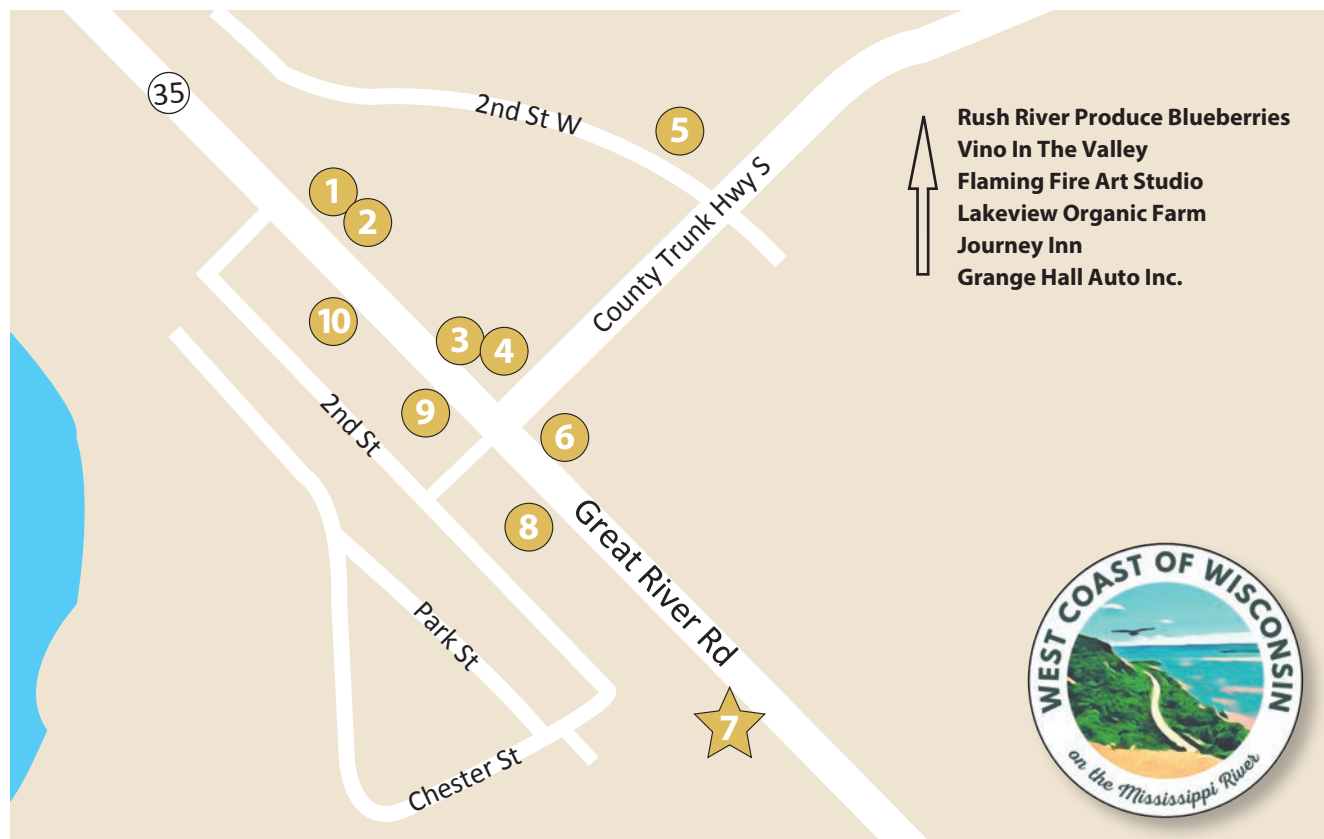
MAIDEN ROCK

- 1 Cultural Cloth**
W3560 State Hwy 35, Maiden Rock, WI
- 2 Smiling Pelican Bakeshop**
W3556 State Road 35, Maiden Rock, WI

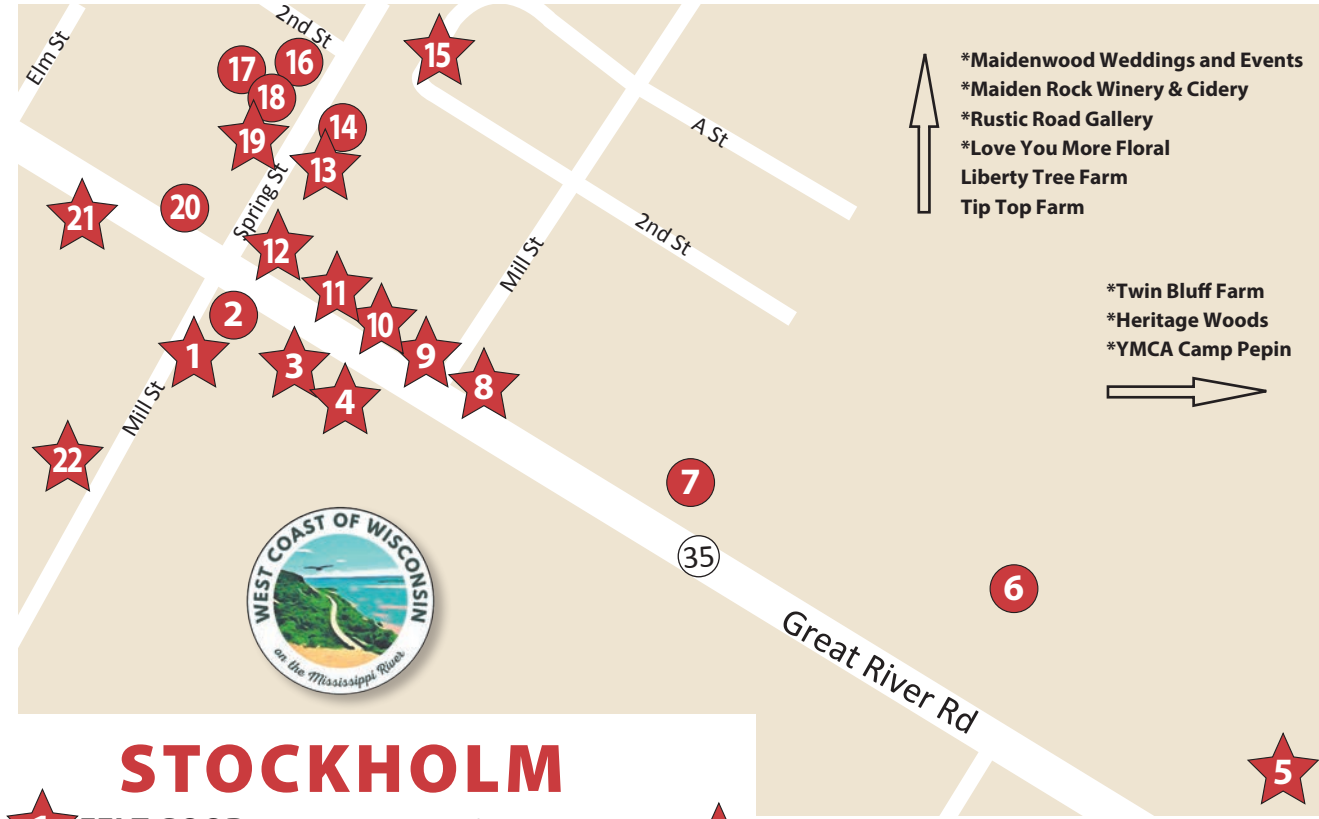
- 3 The Nest Gallery & Art Studio**
W3542 Highway 35, Maiden Rock, WI
- 4 Santosha Springs Yoga**
W3542 WI-35, Maiden Rock, WI
- 5 Maiden Rock Inn**
N531 County Rd S, Maiden Rock, WI

- 6 Hiawatha National Bank**
W3532 Highway 35, Maiden Rock, WI
- 7 MAIDEN ROCK RETREAT: Beautiful lodging and event space in a lovingly restored 1940's era Creamery**
W3487 State Road 35, Maiden Rock
manager@maidenrockretreat.com
www.maidenrockretreat.com
(608) 790-5253
- 8 The Six String Saloon**
W3527 WI-35, Maiden Rock, WI
- 9 35 Express Gas Station**
W3541 WI-35, Maiden Rock, WI
- 10 Limbo Records & Rarities**
W3553 State Rd. 35, Maiden Rock, WI

- North of Maiden Rock–
Rush River Produce Blueberries
W4098 200th Ave, Maiden Rock, WI
Vino In The Valley
W3826 450th Ave, Maiden Rock, WI
Flaming Fire Art Studio
N3002 County Road CC, Maiden Rock, WI
Lakeview Organic Farm
N1972 420th Street, Maiden Rock, WI
Journey Inn
W3671 200th Ave, Maiden Rock, WI
Grange Hall Auto Inc.
W2494 US Highway 10, Maiden Rock, WI



Rush River Produce Blueberries
 Vino In The Valley
 Flaming Fire Art Studio
 Lakeview Organic Farm
 Journey Inn
 Grange Hall Auto Inc.



STOCKHOLM

- 1 FELT GOOD: Whimsical, one of a kind, handmade sewn and felted clothing by local artists. Dyed and natural wool for spinning and felting available.**
N2020 Spring Street, Stockholm, WI
(612) 308-5038, feltgoodstore@gmail.com
- 2 Stockholm Town Mutual Insurance**
W12121 WI-35, Stockholm, WI
- 3 IRIS & OAK: Local art, pottery, gift items, products for the home, delicious consumables, and everyday luxuries for yourself.**
W12117 WI-35, Stockholm, WI
(715) 495-9121, @irisandoakstockholm, irisandoakstockholm@gmail.com
- 4 HUGGA BUGGA: Features original hand-crafted items from local artisans and a large assortment of luxury yarns.**
W12103 State Hwy 35, Stockholm.
(612) 308-1714, www.huggabugga.com, char@huggabugga.com
- 5 LAVENDER BLUFF FARM: Crafts safe, responsibly grown and sourced goods for the body, home and kitchen. Open seasonally for u-pick.**
W11976 Highway 35, Stockholm, WI
(651) 335-0386, www.lavenderbluff.com, info@lavenderbluff.com
- 6 Stockholm Gardens**
W12014 WI-35, Stockholm, WI
- 7 Stockholm Clinic**
12070 WI-35, Stockholm, WI
- 8 RIVERTOWN LANDING: The place to stay to make memories with your loved ones when you embark on a Stockholm adventure!**
W12084 Wisconsin Hwy 35, Stockholm, WI
952-913-6502, info@rivertownlanding.com, www.evolve.com/vacation-rentals/438284
- 9 SCANDIHOO: Blending traditional craft with a fresh, modern aesthetic that embraces Scandinavian style and creativity.**
W12092 WI-35, Stockholm, WI
www.scandihoo.com, info@scandihoo.com, scandihoo@gmail.com
- 10 SANDY'S CLOTHING & ART: Supports artists, ethical companies, and sustainable practices.**
W12098 Hwy 35, Stockholm, WI
715-533-0159, www.sandysclothingandart.com, sandy@sandysclothingandart.com

- 11 THE PALATE: Offers a place for your entertaining taste. Gourmet items, cheese plates and world class wines.**
W12102 State Hwy 35, Stockholm, WI
715-442-6400, www.thepalate.net
- 12 STOCKHOLM PIE AND GENERAL STORE & MARKETPLACE: World famous pie, amazing food, fun General Store, cheese, wine, beer, treats from WI in the Marketplace with tastings daily.**
N2030 Spring St, Stockholm, WI
715-442-5505, www.stockholmmpie.com, pieandgeneral@gmail.com
- 13 ART ORCHARD GALLERY & GUEST HOUSE: Artist Kendra Gebbia's studio, gallery and guest house. Each piece is an original work of art made 100% by Kendra.**
N2042 Spring St, Stockholm, WI
612-770-6741, www.kendragebbia.com, kendra.gebbia@gmail.com
- 14 Northern Oak**
N2048 Spring St, Stockholm, WI
- 15 CALVARY COVENANT CHURCH: Established in March 1887 by the founders of the village of Stockholm.**
105 E 2nd Street, Stockholm, WI
www.stockholmcalvarycov.org
- 16 Hop, Dish & Vine** **18 Little Larke Bakery**
N2047 Spring St, Stockholm
- 17 Indigo Swan**
N2051 Spring St., Stockholm, WI
- 19 STOCKHOLM INSTITUTE MUSEUM: The Stockholm Institute, a/k/a the Stockholm Museum, is a non-profit volunteer organization dedicated to the preservation of materials relating to the history of Stockholm.**
N2041 Spring Street, PO Box 628, Stockholm
- 20 Humble Moon Saloon**
W12128 State Hwy 35, Stockholm, WI

- 21 LITTLE COLONY ART (home business)**
- 22 STOCKHOLM ART FAIR: 49 years of exquisite art on the shores of the Mississippi. Over 100 juried artists showing on the third Saturday of July every year.**
Stockholm Park, (715) 285-5692, www.stockholmartfair.org, stockholmartfair@gmail.com

–Outside Village Proper–
***MAIDENWOOD WEDDINGS AND EVENTS: Wedding and event center that sits on a 40 acre nature reserve nestled in the bluffs. N447 244th St, Stockholm, (715) 544-7771, www.maidenwoodevents.com, hello@maidenwoodevents.com**
***MAIDEN ROCK WINERY & CIDERY: Presenting a unique collection of gluten-free hard ciders and wines produced from fresh local. Tastings daily with apples available in season. W12266 King Lane, Stockholm, 715.448.3502, www.maidenrockappleswinery-cidery.com, info@maidenrockwinerycidery.com**

- Liberty Tree Farm**
W12351 Long Ln, Stockholm
- Tip Top Farm**
N3253 County Road E, Stockholm
- *RUSTIC ROAD GALLERY: Work by Cooper Hansen Nature Photography. W259 20th Ave (aka Rustic Road), Stockholm, www.cooperhansen.com, info1@cooperhansen.com**
- *LOVE YOU MORE FLORAL: Designing fresh, dried & artificial wedding flowers & bringing your inspiration to life is their passion. Exquisite florals for your special event. By appointment only. (612) 578-8505, www.facebook.com/loveyoumorefloral, loveyoumorefloral@gmail.com**
- *TWIN BLUFF FARM: We host events of all kinds. We love supporting our local community! Host your next party, corporate event, class or wedding with us!**
N2089 Twin Bluff Lane Stockholm, (612) 368-7311, www.twinblufffarms.com, twinblufffarms@gmail.com
- *HERITAGE WOODS: Keeps honeybees, harvests honey, mentors new beekeepers, runs hands-on bee-keeping workshops and presents native plant classes. By appointment only. N1593 Bogus Road Stockholm, 763-568-8687, Kathy.Sweeney@comcast.net**
- *YMCA CAMP PEPIN: On the shores of Lake Pepin, Camp Pepin offers camps for kids and available lodging. W10915 E Lake Dr., Stockholm, (877) 395-7665, www.redwingymca.org/camps/camp_pepin, camp@redwingymca.com**

Hugga Bugga
a handcrafted boutique and yarn store.

612.308.1714
W12103 Hwy 35,
Stockholm, WI 54769
char@huggabugga.com

Don't miss the outdoor and garden art at The Shed!

WWW.HUGGABUGGA.COM



PEPIN

- 1 TIN ROOF BOUTIQUE:** *Your favorite spot on The Great River Road for all your home decor, local artisans, refurbished furniture, art and gifting needs!* 202 Third Street, Pepin, WI 715-225-4047, tinroofboutique19@gmail.com, on Facebook at Tin Roof Boutique
- 2 Garden Pub Malt Shop**
210 Third Street, Pepin, WI
- 3 Garden Pub & Grille**
210 Third Street, Pepin
- 4 Alcivia Gas & Convenience Store**
304 Third Street, Pepin
- 5 LAURA INGALLS WILDER MUSEUM:** *A museum dedicated to Pepin's history and the early life of Laura Ingalls Wilder, whose story begins here in Pepin.* 306 Third Street, Pepin, WI 715-513-9115, liwmuseum@lauraingallspepin.com, www.lauraingallspepin.com

- 6 Handy Mart**
300 Third Street, Pepin, WI
- 7 Harbor Hill Inn & General Store**
309 Third Street, Pepin, WI
- 8 Great River Amish Inn**
311 Third Street, Pepin, WI
- 9 Third Base Bar**
409 Third Street, Pepin, WI
- 10 PEPIN LABYRINTH & STUDIO:** *Walking meditation, yoga of all levels and healing sound baths are just a few of the experiences at The Pepin Labyrinth & Studio in the heart of Pepin.* on Facebook @ Pepin Labyrinth
- 11 E&S FRESH MARKET:** *A full-line grocer with a small town, country atmosphere. All your grocery, produce, and fresh meat needs.* 410 Second Street, Pepin, WI 715-442-2441, www.eandsfreshmarket.com

- 12 T&C Latane**
412 Second Street, Pepin, WI
- 13 RIVERTIME:** *A great hangout in downtown Pepin with a large wine list, craft beers, friendly hosts, and live music.* 418 Second Street, Pepin, 612-708-8598, rivertime@rivertimepepin.love, www.rivertimepepin.love
- 14 Bank of Alma**
419 Second Street, Pepin, WI
- 15 United Methodist Church**
504 Second Street, Pepin, WI
- 16 Captain's Legacy Bar & Grill**
206 Lake Street, Pepin, WI
- 17 Immanuel Lutheran Church**
205 Pine Street, Pepin, WI
- 18 Harbor View Café**
314 First Street, Pepin, WI
- 19 Pepin Marina**
303 First Street (Marina Drive), Pepin, WI

- 20 WIMN Sail**
Sailboat Charter Service on Lake Pepin
612-850-3069
- 21 Pepin Sailing School & Charters**
916-276-2937
- 22 THE PICKLE FACTORY:** *Dock your boat or cruise down the Wisconsin Great River Road for fresh food, ice-cold drinks, and live weekend entertainment. The ultimate lakeshore experience!* 205 First Street, Pepin, WI 715-442-4400, paul@pepinpicklefactory.com, www.pepinpicklefactory.com

UNIQUE GIFTS, DÉCOR, APPAREL, HANDBAGS, CANDLES, GAMES AND SPECIALTY FOOD & CANDY. LOCALLY, ONE-OF-A-KIND ARTISAN-MADE HANDCRAFTED ITEMS AND SO MUCH MORE... LOCATED ON THE GREAT RIVER ROAD.

202 Third Street, Pepin | 715-225-4047

LIKE US ON FACEBOOK & INSTAGRAM @TINROOFPEPIN FOR ALL THE LATEST

FRESH ART TOURS

25th Annual Spring & Fall 2023

June 2-3-4 Oct. 6-7-8 Fri, Sat, Sun 10-5pm

Home Studios... Backroads... Galleries... Lake Pepin... Road Trip... Just say!

FreshArt.org

PEPIN BUSINESSES CONTINUE ON PAGE 13

- 23 SMITH BROTHERS LANDING:** *Decorative Metalwork for your garden along with select perennials featuring hosta, lilies & sedum can be all found at Smith Brothers Landing.* 207 First Street (Marina Drive), Pepin
- 24 BNOX JEWELRY STUDIO:** *A tradition of exceptional jewelry inspired by the majestic bluffs, artful beauty awaits you.* 108 Cedar Street, Pepin, WI 715-279-1113, b@bnoxpepin.com, www.bnoxpepin.com. By appointment only, watch Facebook for events.
- 25 Homemade Café**
809 Third Street, Pepin, WI
- 26 PEPIN MOTEL:** *An excellent choice for travelers, offering many helpful amenities designed to enhance your stay.* 305 Elm Street, Pepin, WI 715-442-2012, pepinmotel@gmail.com, www.pepinmotel.com
- 27 LAKE PEPIN CAMPGROUND:** *Enjoy the peacefulness of the great outdoors just blocks from Lake Pepin.* 1010 Locust Street, Pepin, WI 715-442-2012, lakepepincampwi@gmail.com, www.lakepepincampgroundwi.com
- 28 Family Dollar**
1229 Third Street, Pepin, WI
- 29 Soaring Eagle Hot Air Balloon Museum**
211 Oakwood Street, Pepin, WI
- 30 PEPIN GUEST HAUS:** *Cozy yet modern and fresh loft, beautiful views of Lake Pepin, walking distance to everything in town.* 1485 First Street, Pepin, WI, PepinGuestHaus@gmail.com, www.PepinGuestHaus.com, www.VRBO.com
- 31 COUNTRY STOP OF PEPIN:** *From seasonal produce to home décor to patio furniture, from whimsical to practical, The Country Stop of Pepin is a fun stop on the Great River Road.* Corner of State Road 35 & County Road CC, Pepin, WI, 715-442-2429, www.pepincountystop.com
- 32 VILLA BELLEZZA WINERY & VINEYARDS:** *A classical Mediterranean style winery, restaurant and event complex, featuring award-winning wines crafted onsite with locally grown grapes. Experience Villa Bellezza and transport yourself a world away.* 1420 Third Street, Pepin, WI 715-442-2424, www.villabellezza.com

- 33 Hop & Ride Taxi Service**
715-279-2856
- Outside Village Proper—*
- 34 Mac's Auto & Sport, LLC**
W9880 Sand Ridge Road, Pepin, WI
- 35 PEPIN'S RUSTY PEDDLER:** *Vintage to new, unique home décor and thoughtful gift items that will delight you.* N1085 Sand Ridge Road, Pepin, WI 715-441-0560, on Facebook @ Pepin's Rusty Peddler
- 36 The Hidden Meadow & Barn**
W9602 Balsam Lane, Pepin, WI
- 37 Pepin Hill Event Center & Vacation Rental**
W8996 Pepin Hill Road, Pepin, WI
- 38 Little Plum Place**
W8851 County Road N, Pepin, WI



WWW.SANDYSCLOTHINGANDART.COM

A boutique fueled by purpose and passion

Sandy's
Clothing & Art
EMBRACE AUTHENTICITY

Find us!
Sandy's Stockholm on Lake Pepin
Sandy's Barn in the Foster Countryside

When shopping here, you make a difference. We appreciate that, and you!

NELSON

- 1 Township 23 Distillery**
W2363 Co Rd D, Nelson, WI
- 2 Thrive! Park**
E298 Cleveland St., Nelson, WI
- 3 Grace Lutheran Church**
8311 Lincoln St., Nelson, WI
- 4 Nelson Main Street Liquor Stop**
218 N Main St., Nelson, WI
- 5 J & J BBQ & Catering/Laura's Treasures**
208 N Main St., Nelson, WI
- 6 Top Hat Bar**
N204 N Main St., Nelson, WI
- 7 Bank of Alma**
N104 N Main St., Nelson, WI
- 8 Handy Mart**
110 WI-25, Nelson, WI
- 9 Nelson Hotel Bar & Grill**
114 S Main St., Nelson, WI
- 10 Nelson Cheese**
S237 WI-35, Nelson, WI
- 11 Twin Bluff Bar**
274 S Main St., Nelson, WI
- 12 Beth's Twin Bluff Café**
S286 WI-35, Nelson, WI
- 13 Forget-Me-Not Gift Shop**
S290 WI-35, Nelson, WI
- 14 Traynor's Fireworks**
N113 N Main St., Nelson, WI
- 15 Nelson Discount Liquor**
N Main St., Nelson, WI



—Outside of Village—
Stone Barn Pizza
S685 Co Rd KK, Nelson

***BARN AGAIN LODGE:** *A beautiful full-service venue offering indoor and outdoor spaces for your wedding or event, accommodates large parties.* S683 Lovely Road, Mondovi, WI 715-946-3443, barnagainlodge@gmail.com, @BarnAgainLodgeWI

Get Outside!

We all love to get outside, and there is no better place to do that than on the West Coast of Wisconsin! The beautiful Lake Pepin area is perfect for a day trip or weekend outdoor adventure. You can fish, you can kayak, you can hike! We love the 5 local Get Outdoors and Hike options, along with a few other nearby spots along or near the Great River Road on the West Coast of Wisconsin you will find:

1) Maiden Rock Bluff State Natural Area Just outside of Stockholm Wisconsin, about 3 miles up County J, you will find this State Natural Area. The Area is the home of several rare animal and plant species, including nesting peregrine falcons, golden and bald eagles, and 250-year-old red cedars. The approx. 2-mile trail takes you through ancient cedars, native prairie and to one of the most iconic views on the whole of the Mississippi. Sunsets here are breathtaking and beyond compare. You can find out more information at <https://dnr.wi.gov/topic/Lands/naturalareas/index.asp?SNA=410>.

2) Tiffany Bottoms Wildlife Area Down river from Pepin, WI is one of the most important, biodiverse wildlife areas in the country. Tiffany Bottoms State Natural Area is a small portion of the most extensive river delta in the Midwest and contains 13000 acres of the larger Tiffany Bottoms floodplain forest. The site captures the transition between typical flood-

plain forest of silver maple, river birch, ashes, and basswood in the southern portion and the more oak dominated forest in the northern part. One of the more unique ways to explore this area, although not a hike, is the Tiffany Bottoms Train Ride which follows an old railbed through the Tiffany Bottoms. You can learn more about the train here at <http://chippewavalleymotorcarassociation.ellawisc.com>. Do be aware that trails throughout the wildlife area are not marked and can be flooded at times. Bring bug Spray. For more information about the Wildlife Area, you can go to <https://dnr.wi.gov/topic/Lands/naturalareas/index.asp?SNA=30>.

3) Five Mile Bluff State Natural Area The Natural Area is technically a part of the greater Tiffany Bottoms Area, but on the west side of the grand Chippewa River. A trail takes you through a diverse and fragile ecosystem that gets you close to floodplain forests, wild grasses, and oak barrens. The trail runs about 3-miles total. From a parking lot at the end of 16th Creek Road, the trail heads north at the base of Five Mile Bluff then loops to and over its top, which is more than 300 feet above the river. Information can be found at <https://dnr.wi.gov/topic/Lands/naturalareas/index.asp?SNA=236>.

4) Swede Ramble Trail Also part of the Tiffany Bottoms Wildlife area, the trail can be found on the west side of the Chippewa River. The trail is about 4-miles one-way through a meadow and the bottomland hardwood forest. Start at the parking lot off Swede Ramble Lane southeast of Little Plum Creek and end at another lot off of Tulip Lane east of Big Hill Road. A bit more info can be found here at <https://dnr.wi.gov/topic/lands/documents/tiffany.pdf>.

5) Thrive! Center and Thrive! Park Thrive! Park, a public park, of the Village of Nelson. The Park is unique in that it consists of over 25 acres of Mississippi River bluff top and bluff side. The primary bluff is the Sisters and Lost Brother. The three southernmost bluff tops are in the Park and accessible via hiking roads and trails. On the bluff tops and bluff sides are "goat prairies" that have recently been cleared as part of a larger prairie restoration effort around Nelson. Thrive! Park is east of Highway 35 in Nelson (WI). Take Cleveland Street toward bluffs. As you enter woods, turn left on Christopherson Road. Just after turn, there is a parking lot on right to park. Park entrance and road/trail markings are just left of parking lot. There is also parking up the paved road below the Fish Pond. Free maps are generally available at the park entrance. More information about the Center and trail can be found at <http://www.thrivepark.org/>.

Also nearby and worth the drive:
Nine Mile Island State Natural Area <https://dnr.wi.gov/topic/Lands/naturalareas/index.asp?SNA=236>.

Holden Park Trails <https://dnr.wi.gov/topic/Lands/naturalareas/index.asp?SNA=236>

Chippewa River State Bike Trail <https://dnr.wisconsin.gov/topic/parks/chipriver> 🌸



Bird Watching Along the West Coast of Wisconsin

Regions throughout Pepin County offer amazing bird watching experiences for visitors and locals alike. With prime locations on the Mississippi and Chippewa Rivers, the Driftless limestone bluffs, and a variety of state natural areas, there are numerous bird habitats and species that

bird watchers can spot throughout the area.

Pepin County's unique location also brings some of North America's greatest migratory bird species through the region. Because of this, there is a fun bird scavenger hunt for bird watchers, with over 180 bird species to spot throughout the region, that you can find at VisitPepinCounty.com. Get started on your next visit with these great locations:

Tiffany Bottoms State Natural Area

The Tiffany Bottoms State Natural Area is a part of the Tiffany Bottom floodplain forest, making it an extensive home for many species of birds and wildlife in general. Bird watchers can visit the area and spot rare and uncommon raptors, warblers, Great-Blue Heron, Pileated Woodpeckers, and Blue-Gray Gnatcatchers.

Five-Mile Bluff Prairie State Natural Area

This state natural area located on the Chippewa River in Pepin is another birding destination in Pepin County. The Chippewa River Valley is home to many species of birds due to the unique topography of the area and its variety of

habitats. Large numbers of migrating hawks and eagles can be seen, as well as other common species.

Lake Pepin

Lake Pepin, on the Mississippi River, is a destination on the border of Pepin County that is considered a mecca for bird watching throughout the year. The Lake Pepin area is a National Audubon Society's Important Birding Area, giving it a formal designation as an excellent place to spot a large variety of birds. Bird watchers can view American Bald Eagles, tundra swans, pelicans, hawks, falcons, warblers, and more. During the warmer months, bird watchers can even head out on local boat excursions into the backwaters of the Mississippi for a unique birding experience.

Pine Creek Preserve

Pine Creek Preserve, located near Maiden Rock, is a great place in Pepin County to see wildlife of all kinds. But the Pine Creek Valley is widely regarded as one of the county's best birding spots. The creek features an undisturbed wooded valley and cool, clear water, making it a great habitat for many bird species. Bird watchers should consider visiting the Pine Creek Preserve area to check off a variety of species on their scavenger hunt list.

Maiden Rock Bluff

Along with beautiful scenic views of the Mississippi River, Lake Pepin, and Pepin County, at the top of Maiden Rock Bluff bird watchers will also find a variety of raptor species.

The rocky limestone bluffs provide hunting perches and habitats for gyrfalcons, golden eagles, bald eagles, and turkey vultures. This location is also along the Mississippi River Flyway, making it an important migration channel for a variety of bird species. 🌸

Article courtesy of visitpepincounty.com.



Smith Brothers Landing
Decorative Metal Work



Perennials & Hostas Fused Glass Garden Art

200 East Marina Drive, Pepin, WI
smbreland@riverland.com.net
715-279-1704



EST. 2022

LAVENDER BLUFF
FARM

STOCKHOLM WISCONSIN

Pick your own Lavender coming in July! www.lavenderbluff.com
W11976 Highway 35, Stockholm, WI 54769 (715) 991-0060



Lavender Bluff Farm crafts safe, responsibly grown and sourced goods for the body, home and kitchen, our lavender CBD products make you feel good about you, and the world around you.



West Coast of Wisconsin Cultural Festivals & Events for 2023

The Great River Road corridor on the Wisconsin side of Lake Pepin on the Mississippi has a deep history in celebrating the arts and culture of our region. Celebrations and festivals fill the calendar with enticing reasons to join in the fun! This list looks at 9 of the most beloved annual events. You can find information on all at www.thewestcoastofwisconsin.com

1) 25th Spring Fresh Art Tour: June 2nd, 3rd and 4th, 2023. Explore scenic backroads and enjoy spring's exuberance on this self-guided tour of our home studios and galleries. Throughout the picturesque villages & countryside of Pepin, Pierce & Buffalo counties, the artists who call this area home welcome you. Come hear their stories and take home a bit of their inspiration. For more information check out <https://www.freshart.org>.

2) Home at Laura's Place! The second full weekend of the months of June, July and August. There will be living history demonstrations at the Laura Ingalls Wilder wayside cabin near Pepin. These weekends will offer the public a taste of what life was like for people of the 1870's. The cabin will be furnished, and demonstrators will be preparing period food and involved with period activities. See <https://www.lauraingallspepin.com> for more info as it becomes available.

3) Annual 4th of July Parade & Festivities (Stockholm): Tuesday, July 4th 1 P.M. There is nothing purer Americana than celebrating the Fourth of July in a small town. Join in the celebration for the annual parade at 1 pm followed by music and happenings around town. Hang out till dark and enjoy fireworks just up the hill in Lund, up the road in Maiden Rock or down in Stockholm Park where you can see fireworks from Lake City, Wabasha, Maiden Rock, and Red Wing! Visit www.stockholmwisconsin.com for details.

4) Stockholm Art Fair: A grand summertime tradition returns to the shores of Lake Pepin with the 49th Stockholm Art Fair on Saturday, July 15th, 2023, 10:00 a.m.-5:00 p.m. More than ninety new and returning artists have been juried into the spectacular one-day festival in the beautiful Stockholm Village Park. They will be showcasing work in all media including pottery, metal sculpture, jewelry, painting, printmaking, photography, fiber, wood, and glass. Accompanying them is an equally talented and diverse line-up of musical performers gracing the stage throughout the day. Fine local food vendors will be providing eats and

treats on-site. Visit www.stockholmartfair.org for details.

5) Laura Ingalls Wilder Days (Pepin): September 9th & 10th Laura Ingalls Wilder Days is a family-oriented event featuring arts & educational entertainment based on the early American pioneer experience of storybook author, Laura Ingalls Wilder. Laura Days is held annually during the second full weekend in September in the village and surrounding hillsides of Laura's birthplace - Pepin, Wisconsin. Follow <http://www.lauradays.org> for details.

6) Fall Fresh Art Tour: October 6th, 7th, & 8th, 2023 (The first full weekend in October every year.) Join us on the 25th Fall Fresh Art Tour Explore scenic backroads and submerge yourself in nature's autumn artistry on this self-guided tour of our home studios and galleries. Throughout the picturesque villages & countryside of Pepin & Pierce counties, the artists who call this area home welcome you. Come hear their stories and take home a bit of their inspiration. Grab a snack, pick up a tour map at any one of the 21 sites, and watch for Fresh Art Tour signs along the way. More info is available at www.freshart.org

7) Women's Weekend: "West Coast Style" On the West Coast of Wisconsin. Friday, Saturday & Sunday, November 3-5, 2023 (The first full weekend in November every year) The annual event celebrates the glories of fall and friendship. You will find the Coast filled with special events, activities, food, fellowship, and fun! Visit www.thewestcoastofwisconsin.com for full details as they are posted.

8) Christmas on The West Coast of Wisconsin
Villa Bellezza Outdoor Christmas Market (Pepin): Dates TBD. Experience the tradition of a European outdoor

Christmas market on the Wisconsin Great River Road. The piazza is transformed into a beautiful and lighted market, welcoming guests to shop local artisans and retailers for the holiday season. Check out <https://www.villabellezza.com> for details.


God Jul: A Stockholm Christmas. Saturday Dec 2nd, 9th and 16th, 2023 (First three weekends in December every year) A Three weekend long celebration of the Season! Each weekend is filled

with beauty, creativity, and the true spirit of the Holiday.
Dec 2nd: A Swedish Christmas (Stockholm). A celebration filled with tradition! Visit with our very own Jultomte & Mini Tomte, Photo Ops, Gifts & Holiday Treats! Keep your eyes peeled for the "Jultomte," a gnome-like creature who generally makes an appearance around Christmastime, riding a horse-drawn wagon through the village. (Weather permitting) Santa Lucia and our mini-Tomte will be in the village for photo opportunities and visiting. Gifts, hot drinks, and holiday food throughout the day!

Dec 9th: Handmade Holiday (Stockholm). Fill your holiday with joy and your wishlist with unique and lovely things from the merchants of the village. Stop in many of the shops and make your own handcrafted gifts and decorations. Fun for kids and adults! Visit a quaint holiday Jul Market at The Stockholm Opera Hall event center, filled with delightful gifts.

Dec 16th: Fires of Stockholm. Celebrate the Winter Solstice! See the village lit as if in a magic fairy tale as the streets are lined with luminaries, ice candles, torches, and bonfires as the sun wains, culminating in a Solstice Celebration. Come marvel at the beauty and creativity!

Our very own village of Stockholm was named the best holiday town in America under 500 people! Check out Facebook.com/TheWestCoastofWisconsin for more local holiday events during November and December. 🌸



Pepin Labyrinth
Yoga - Movement
Meditation - Workshops

408 2nd St Pepin, WI 54759
Facebook - Pepin Labyrinth for schedule and events
Marie Alexander
612-702-4769



STOCKHOLM ART FAIR | 49

Join us for a full day of fine art and craft, fabulous food and a great lineup of local live music. All happening in the beautiful, shaded village park on the shores of Lake Pepin in Stockholm, Wisconsin.

Saturday, July 15, 2023, 10-5



Whimsical, one of a kind clothing, hand-spun yarn, felt, and wool from my farm. 🌿



FELT GOOD!
Clothes you can trust.

Stop in! If I'm not at the shop, give me a shout and I'll meet you! -Monica

N2020 Spring Street
Stockholm, WI
612.308.5038
feltgoodstore@gmail.com